

CURRIER  
MUSEUM  
*of* ART

# ANNUAL REPORT



FISCAL YEAR  
**2015**



# ANNUAL REPORT



Dear Members & Friends .....	2-4
Works On Loan .....	5-7
Acquisitions & Gifts .....	8-12
Donors & Members.....	13-22
Exhibitions & Sponsors.....	23-24
Trustees, Advisory Council and Guild.....	25
Staff .....	26
Financial Statement.....	27

Cover images, clockwise: Visitors take a Currier Collections tour; participants enjoy an art-making activity at Currier After Hours; Art Center outreach program at INTI Academy; Art Center vacation campers with teen docent; Members stroll the galleries at the opening of *From Birds to Beasts: Audubon's Last Great Adventure*; teen student gets hands on with a painting activity during an Art Center vacation camp; youth students learn how to throw on the wheel during an Art Center class; mixing and mingling during Currier After Hours in the Winter Garden Café.



Image: Visitors line up to see the blockbuster hit M.C. Escher: Reality and Illusion.

# DEAR MEMBERS & FRIENDS

Fiscal Year 2015 (July 1, 2014 – June 30, 2015) was a year full of energy and community engagement that was enhanced through partnerships with colleague institutions. The fall exhibition *M.C. Escher: Reality and Illusion* set the tone. It brought to the Currier more than 29,900 enthusiastic visitors of all ages and backgrounds, from elementary school students who were introduced to Escher in math class to “boomers” who had Escher posters pinned to the walls of their college dorms decades ago. Many visitors came as many as four times, and a common remark we heard was how much visitors learned about the full range of Escher’s artistic achievements and his high level of craftsmanship. A record number of schoolchildren toured the show guided by our very capable, dedicated docents. The Currier took this opportunity to collaborate with the SEE Science Center, which developed a companion exhibition and hosted a related talk at its monthly Science Café.

In spring 2015, the Currier presented *Still Life: 1970s Photorealism* from the collection of Yale University Art Gallery. A lifelike sculpture of a drug addict created by Duane Hanson provided the opportunity for the Currier to join forces with the Farnum Rehabilitation Center, Hope for Recovery NH, and Makin’ It Happen to present a compelling panel discussion on the drug epidemic which has become, unfortunately, part of a national dialogue.

*Still Life* also gave our curatorial staff an opportunity to develop a small installation, *From Painterly to Precise: Richard Estes at the Currier*. Estes was a leader in the photorealism movement, and the Currier purchased two cornerstone works by him: a major New York City painting entitled *Baby Doll Lounge* (1978) and a screen print of reflections in a store window called *Qualicraft Shoes* (1974).

The third major exhibition of FY15 was *From Birds to Beasts: Audubon’s Last Great Adventure*. The Currier partnered with New Hampshire Audubon, which owns an imperial portfolio of



From left to right: Visitors contemplate prints by Walton Ford; Exploring the exhibition *From Birds to Beasts: Audubon's Last Great Adventure*; kids learning and having fun at *M.C. Escher: Reality and Illusion*.

*Viviparous Quadrupeds of North America* (1845-1848). The focus of the exhibition was a selection of J.J. Audubon's 150 hand-colored lithographic plates of mammals from this portfolio. Naturalists from NH Audubon wrote several interpretive labels, and the Squam Lakes Natural Science Center in Holderness lent to the exhibition mounts of mammals that Audubon depicted. The exhibition concluded with several prints by contemporary artist Walton Ford, who was inspired by Audubon.

The Library also had a busy and productive year. Exhibitions presented just outside the Library revealed some of the rich resources in the Currier Archives and book collections. Exhibitions focused on travel photography from the late-19th century to a selection of papers and books of former Currier director Robert "Mac" Doty donated by his family, as well as selections from the archives of the Zimmerman House designed by Frank Lloyd Wright. Online access was made available to articles from the Currier's Bulletins which provide early scholarship on objects in the collection.

The Art Center broadened its partnerships to increase its impact on students of all ages in the community. Support from various corporate and family funders made it possible to reach out and offer tuition-free art enrichment to children of active duty military families, boys and girls of the INTI Academy and the Boys and Girls Club of Manchester, Head Start programs in Nashua and Manchester and adults with developmental disabilities from The Plus Company of Nashua. Finally, The Alzheimer's Café at the Currier offers time for the uplifting effects of socializing and educator-led conversation about art to those experiencing memory loss, along with their caregivers.

The second Heart of the Arts raised significant support for all forms of art education at the Currier. The evening, organized by a dedicated group of Advisory Council members (Amelia Curti, Pat Howard, Liz Morgan, Linda Robinson and June Trisciani) chaired by Terry Heinzmann netted \$110,000. We thank all who donated, supported and bid high that evening. It was an inspiring evening highlighting the Currier's broad art education impact.

Access for all to the Currier's collections, exhibitions and programs remains a high priority, and we are grateful for the support we received from area businesses and foundations to support these initiatives. Free Saturday mornings for New Hampshire residents continues to be the most consistently popular time to visit; Currier After Hours is growing a strong, diverse attendance; Yellow Bus Fund enables schools that need support for transportation to bring students to the Museum; Nashua fourth grade and Manchester fifth grade school visits ensure that these

students have an art museum experience because the Currier covers all costs. All of these programs continue to grow, which demonstrates their value to the community.

The Currier actively lent its collections with such major loans as Claude Monet's *Seine at Bougival* which traveled to the Museum of Fine Arts, Houston for the exhibition *Monet on the Seine*; and Childe Hassam's *Goldfish Bowl Window* was lent to the Chrysler Museum and the Pennsylvania Academy of Fine Arts for the exhibition, *The Artist's Garden*. Locally, the Currier lent a large selection of prints and its painting of Helen of Troy, all by the Dutch artist Hendrik Goltzius to the Bowdoin College Museum of Art; and a group of ceramics by Ed and Mary Scheier, as well as work by their colleagues Winslow Eaves, Karl Drerup and Herb Waters were lent to the Discover Portsmouth Center.

The collections, one of the Currier's greatest resources, continued to grow through the generosity of donors and through purchase. We acquired work by accomplished artists who live in New England and work in a variety of different media, including Eric Aho, Vivian Beer, Varujan Boghosian, Eleanor Briggs, Dan Dailey, Chris Gustin and Linda MacNeil. A strong grouping of photographs came through a generous gift of Joan Doty, whose husband Mac Doty was director of the Currier from 1977 to 1987. Ruth and David Waterbury significantly enhanced our growing collection of turned wood objects with a gift of 11 pieces. Long-time trustee Lucy Breed, her husband, Hunt, and their sons gave a major abstract painting by Russian-born American painter Ilya Bolotowsky in honor of trustee Kimon S. Zachos.

In closing we wish to remember Kimon S. Zachos, who died suddenly on December 31, 2014. There was no one who loved the Currier Museum of Art more than Kimon, who served as trustee for 47 years and President of the Board for 23. During his tenure as trustee, the Museum underwent three major expansions (1980-82, 1994-95, and 2006-08); added the former Pearl Manor building as a new facility for the Art Center and acquired the Zimmerman House. He worked tirelessly on three capital campaigns and chaired just about every trustee committee at one point or another. Kimon challenged us all to raise the bar, to make the Currier better, and he expected nothing less of himself. Through his bequest, Kimon and his wife, Anne, established our first endowment for exhibition support. In recognition of all they have done for the Currier, a gallery was named in their honor. We all will miss Kimon very much.

In his spirit, we thank all of you for your support and for joining with the Board, the Advisory Council, the Guild of Volunteers, and thank the Members, too, in helping the Currier effectively serve more of its community across the region by providing enriching encounters with art.

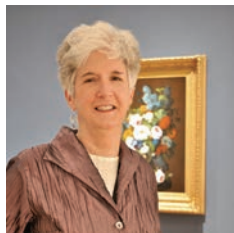
### **M. Christine Dwyer**

President



### **Susan Strickler**

Director and CEO



# WORKS ON LOAN

---



Claude Monet, *The Seine at Bougival*, 1869, oil on canvas,  
Museum Purchase: Currier Funds, 1949.1

## Los Angeles County Museum of Art

Marsden Hartley – *The German Paintings*

**Marsden Hartley**, American, 1877-1943

*Raptus*, c. 1913

oil on canvas, Gift of Paul and Hazel Strand  
in Memory of Elizabeth McCausland, 1965.4

## Bowdoin College Museum of Art

Brunswick, ME

Hendrik Goltzius: *Mythology and Truth*

**Hendrik Goltzius**, Dutch, 1558-1617

*Helen of Troy*, 1615

oil on canvas, Gift of David Giles Carter and  
Museum Purchase: The Henry Melville Fuller  
Acquisition Fund, 2007.5

*The Last Supper*, 1598

engraving, Museum Purchase: The Henry  
Melville Fuller Acquisition Fund, 2010.26.10.1

*The Betrayal of Christ*, 1598

engraving, Museum Purchase: The Henry  
Melville Fuller Acquisition Fund, 2010.26.10.3

*Christ before Pilate*, 1596

engraving, Museum Purchase: The Henry  
Melville Fuller Acquisition Fund, 2010.26.10.5

*Christ Crowned with Thorns*, 1597

engraving, Museum Purchase: The Henry  
Melville Fuller Acquisition Fund, 2010.26.10.7

*The Bearing of the Cross*, 1598

engraving, Museum Purchase: The Henry  
Melville Fuller Acquisition Fund,  
2010.26.10.9

*Calvary*, 1598

engraving, Museum Purchase: The Henry  
Melville Fuller Acquisition Fund,  
2010.26.10.10

*The Deposition*, 1596

engraving, Museum Purchase: The Henry  
Melville Fuller Acquisition Fund, 2010.26.10.11

*The Resurrection*, 1596

engraving, Museum Purchase: The Henry  
Melville Fuller Acquisition Fund, 2010.26.10.12

*The Captain of the Infantry*, 1587

engraving, Museum Purchase: The Henry  
Melville Fuller Acquisition Fund,  
2010.26.7

*Mars and Venus Surprised by Vulcan*, 1585

engraving, Museum Purchase: The Henry  
Melville Fuller Acquisition Fund,  
2010.26.8

## Museum of Fine Arts, Houston, TX

*Monet on the Seine: Impressions of a River*

**Claude Monet**, French, 1840-1926

*The Seine at Bougival*, 1869

oil on canvas, Museum Purchase: Currier  
Funds, 1949.1

**Smithsonian Institution Traveling Exhibition**

**Service;** Miriam and Ira D. Wallach Art Gallery, Columbia University, New York, NY  
*Romare Bearden: A Black Odyssey*

**Romare Bearden**, American, 1911-1988

*Battle with Cicones*, 1977

collage of various papers with graphite on fiberboard, Museum Purchase: The Henry Melville Fuller Acquisition Fund, 2012.28

**National Museum of Women in the Arts**

Washington, DC

*Picturing Mary: Woman, Mother, Idea*

**Rembrandt Harmensz van Rijn**,

Dutch, 1606-1669

*The Death of the Virgin*, 1639

etching, Museum Purchase: The Henry Melville Fuller Acquisition Fund, 2010.26.19

**Montclair Art Museum**, Montclair, NJ and

**Telfair Museums**, Savannah, GA

*Come As You Are: Art of the 1990s*

**Glenn Ligon**, American, b. 1960

*Invisible Man (Two Views)*, 1991

oil and gesso on canvas, Museum Purchase: The Henry Melville Fuller Acquisition Fund, 2010.22a,b

**Pennsylvania Academy of the Fine Arts** and

**Chrysler Museum of Art**, Norfolk, VA

*The Artist's Garden: American Impressionism and the Garden Movement, 1887-1920*

**Childe Hassam**, American, 1859-1935

*The Goldfish Window*, 1916

oil on canvas, Museum Purchase: Currier Funds, 1937.2

**Smithsonian American Art Museum**

Washington, DC

*The Artistic Journey of Yasuo Kuniyoshi*

**Yasuo Kuniyoshi**, American (b. Japan), 1889-1953

*Orange*, 1925

watercolor and ink on paper, Gift of Warren S. Hallamore in memory of his sister, Alma G. Hallamore, 1996.11

**Portsmouth Historical Society,**

**Discover Portsmouth**, Portsmouth, NH

*The Art of Edwin and Mary Scheier*

**Leonard Brooks**, Canadian (b. England), b. 1911

*Untitled*, 1955

oil on Masonite, Bequest of Edwin and Mary Scheier, S08.103

**Karl Drerup**, American (b. Germany)

1904-2000

*Diptych*

enamel in pewter frame, Gift of Edwin and Mary Scheier, S.66

**Winslow Eaves**, American, 1922-2003

*Untitled*, 1950

bronze on marble base, Gift of Edwin and Mary Scheier, S.74

**Glen Krause**, American, 1914-1981

*Pine Tree Studio #1*, 1973

oil on canvas, Bequest of Edwin and Mary Scheier, S08.102

**Edwin Scheier**, American, 1910-2008

**Mary Scheier**, American, 1908-2007

*Slab from Kiln*, c. 1950

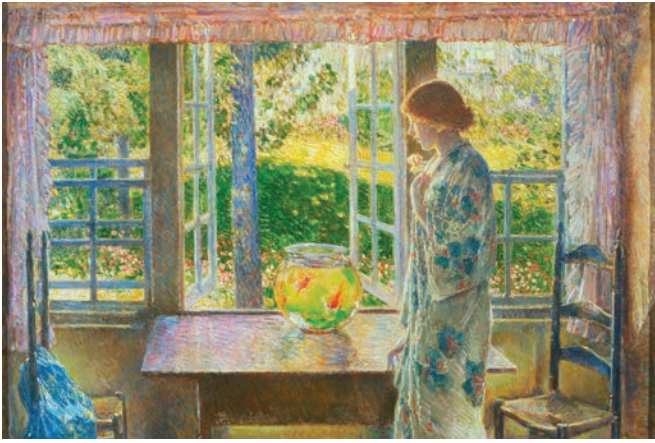
carborundum, Bequest of Isadore J. and Lucille Zimmerman, 1988.7.171

*Untitled*, 1968

guanacaste wood with animal fur, Gift of Edwin and Mary Scheier, S.20



Romare Bearden, *Battle With Cicones*, 1977. Collage of various papers with graphite on fiberboard, Museum Purchase: The Henry Melville Fuller Acquisition Fund, 2012.28. Art © Romare Bearden Foundation/Licensed by VAGA, New York.



Childe Hassam, *The Goldfish Window*, 1916, oil on canvas,  
Museum Purchase: Currier Funds, 1937.2

*Wood Block*  
wood, Gift of Edwin and Mary Scheier, S.84

*Wood Block*  
Wood, Gift of Edwin and Mary Scheier, S.86

*Untitled*, 1981  
sand painting on paper, mounted on board,  
Gift of Edwin and Mary Scheier, S.286

*Untitled*, c.1975  
sand painting on paper, Gift of Edwin and  
Mary Scheier, S.288

*Untitled*, c. 1969  
hand-colored woodcut, Gift of Edwin and  
Mary Scheier, S.293

*Untitled*, c.1969  
hand-colored woodcut, Gift of Edwin and  
Mary Scheier, S.295

*Untitled*, 1981  
sand painting on paper mounted on board,  
Gift of Edwin and Mary Scheier, S.323

*Untitled*, 1979  
sand painting on paper mounted on board,  
Gift of Edwin and Mary Scheier, S.325

*Untitled*, 1982  
sand painting on paper mounted on board,  
Gift of Edwin and Mary Scheier, S.326

*Untitled*, 1965  
hand-colored woodcut, Gift of Edwin and  
Mary Scheier, S.328

*Untitled*, 1963  
guanacaste wood, Bequest of Edwin and  
Mary Scheier, S08.86

*Untitled*  
guanacaste wood, Bequest of Edwin and  
Mary Scheier, S08.87

**Winifred Clark Shaw**, American, 1921-1994  
*Tea Set*  
silver, Museum Purchase: The Ed and Mary  
Scheier Acquisition Fund, 2012.40.1-3

**Herbert Ogden Waters**, American (b. China),  
1903-1996  
*Christmas Card*, 1952  
wood engraving, Gift of Edwin and Mary  
Scheier, S.349

**Fenimore Art Museum**, Cooperstown, NY  
*Maxfield Parrish: Art of Light and Illusion*  
**Maxfield Parrish**, American, 1870-1966  
*Freeman Farm: Winter*, 1935  
oil on board, Gift of Jack and Harriet  
Hemenway in honor of Joseph I. Caldwell,  
2008.1

*Advertisement Card for Manchester Traction,  
Light and Power Co.*, 1922  
lithograph, Gift of Patricia Sullivan Meyers,  
1998.5.1

**Bruce Museum**, Greenwich, CT  
*The Sins: Pride*  
**Thomas Cole**, American, 1801-1848  
*Landscape with Tower in Ruin*, 1839  
oil on canvas, Museum Purchase: Gift of the  
Friends, 1980.7



# ACQUISITIONS & GIFTS



Richard Estes, *Qualicraft Shoes (The Chinese Lady)*, 1974, screenprint in colors on Fabriano cotton mounted on museum board (as issued), 2014.42. © Richard Estes, courtesy Marlborough Gallery, New York.

## Purchases

### The Henry Melville Fuller Acquisition Fund

**Eleanor Briggs**, American, b. 1939  
*Norway Pond (Diptych)*, 2011, archival pigment inkjet prints, 2014.36a,b

**Richard Estes**, American, b. 1932  
*Qualicraft Shoes (The Chinese Lady)*, 1974, screenprint in colors on Fabriano cotton mounted on museum board, 2014.42

**Tara Donovan**, American, b. 1969  
*Untitled*, 2008, ink on paper, 2014.45

**Richard Estes**, American, b. 1932  
*Baby Doll Lounge*, 1978, oil on canvas, 2014.48

**Jerome Liebling**, American, 1924-2011  
*Vegetable Woman, Lower East Side, New York City*, 1947, gelatin silver print, 2015.11

*May Day, Union Square Park, New York City*, 1948, gelatin silver print, 2015.12

**Fred W. McDarrah**, American, 1926-2007  
*Marisol Escobar in Her Loft*, April 14, 1966, gelatin silver print (printed c. 1970), 2015.13

*Adolph Gottlieb in His Studio*, February 16, 1962, gelatin silver print, 2015.14

*Mark Di Suvero at Green Gallery*, October 18, 1960, gelatin silver print, 2015.15

**Eric Aho**, American, b. 1966  
*Nicolas (Reworked)*, 2014-15, oil on linen, 2015.16

**John Woodrow Wilson**, American, 1922-2015  
*Deliver us from Evil*, 1943, lithograph, 2015.18

## The Print Fund

**Tara Donovan**, American, b. 1969  
*Untitled (Rubber Bands)*, 2006, relief print from rubber bands matrix, 2014.46

*Untitled (Rubber Bands)*, 2006, relief print from rubber bands matrix, 2014.47

## The Ed and Mary Scheier Acquisition Fund

**Ruth Duckworth**, American, 1919-2009  
*Untitled*, 2005, porcelain, 2014.27

**Linda MacNeil**, American, b. 1954  
*Lotus Necklace with Earrings*, 1999, Waterford crystal, glass, 18K yellow gold, 2014.33.1 and 2ab

*Mesh Necklace*, 1997, Vitrolite glass, 24K gold plated brass, 2014.34

*Untitled* from Brooch Series, 2013  
Vitrolite glass, acid polished blue and red mirrored glass, 24K gold plated brass, 2014.35

**John Parker Glick**, American, b. 1938  
*Plate*, 2011, stoneware, 2014.39

**Maija Grotell**, American,  
b. Finland, 1899-1973  
*Untitled*, 1956, stoneware, 2015.7

**Chris Gustin**, American, b. 1952  
*Vessel with Neck #1401*, 2014, stoneware,  
Anagama wood fired, 2015.8

**Vivian Beer**, American, b. 1977  
*Anchored Candy no. 8*, 2015, formed and  
fabricated steel, automotive finish, gun blue  
patina, 2015.19



Vivian Beer, American, b. 1977, *Anchored Candy no.8*, 2015, formed and fabricated steel, automotive finish, gun blue patina, 2015.19.

## The Kimon S. Zachos Acquisition Fund and the Henry Melville Fuller Fund

**Elizabeth Catlett**, American, 1915-2012  
*Mother and Child*, c. 1970, mahogany,  
2014.43

## The Kimon S. Zachos Acquisition Fund and The Ed and Mary Scheier Acquisition Fund

**Dan Dailey**, American, b. 1947  
*Nude Looking Back (Illuminated Sculpture)*,  
2007, fabricated, patinated, nickel and gold  
plated bronze; blown glass shade; anodized  
aluminum and Vitrolite glass mosaic base;  
pate de verre and lampworked glass  
details, 2014.44

## Purchases by Exchange

Gift of Margaret Scott Carter, by exchange  
**Benjamin Burt**, American, 1729-1805  
*Teapot*, c. 1765, silver, 2015.2

Bequest of May Gruber, by exchange  
**Joan Mitchell**, American, 1925-1992  
*Composition Jaune / Grise: Fields*, 1990,  
lithograph, 2015.3

*Champs (Black, Gray and Green)*, 1991-92,  
lithograph, 2015.4

*Trees I*, 1992, lithograph on two sheets,  
2015.5

## Gifts

### Gift of Anne and Harry Wollman

**Francesco Clemente**, Italian, b. 1952  
*I*, 1982, color woodcut, 2014.24

**Michael Lucero**, American, b. 1953  
*Anthropomorphic Male Teapot with Hat*,  
1993, (from New World series), earthenware  
with glazes, 2014.25

### Gift of Zeff and Andronica Wheelock, Children of Nancy B. Tieken

**Judy Kensley McKie**, American, b. 1944  
*Glass Top Table with Dogs*, 1981, walnut and  
glass, 2014.26abc

### Gift of Anne MacDougall Einstein

**Lotte Jacobi**, American, 1896-1900  
*Water: Snow, n.d.*, gelatin silver print, 2014.28

### Gift of Susan Strickler in memory of Helen Farr Sloan

**Edward Penfield**, American, 1866-1925  
*Harper's August / Tom Sawyer Detective*,  
1896, lithograph (poster), 2014.29

### Gift of Joan Doty

**E.J. Bellocq**, American, 1873-1949  
*Untitled*, from *Storyville Portraits*, 1912, gelatin  
silver printing-out-paper print, gold chloride  
toned (Lee Friedlander print, c. 1970),  
2014.30.1

**William H. Gardiner**, American (b. Canada),  
1861-1935  
*Daytona the Beautiful*, n.d., albumen print  
mounted as a postcard, 2014.30.2

**Lewis Wickes Hine**, American, 1874-1940  
*Italian Family Seeking Lost Baggage*, Ellis  
Island, NY, 1905, gelatin silver print, 2014.30.3

*Group of Slavic Mothers Who have just  
Arrived*, Ellis Island, NY, 1905, gelatin silver  
print, 2014.30.4

*Girl and Sick Father*, 1910, (printed by Gerda  
Peterich, 1956), gelatin silver print, 2014.30.5

**Joel Katz**, American, b.1943  
*Mobile St., Hattiesburg, Miss. July, 1964*,  
gelatin silver print, 2014.30.6

**George Lee**, American, b. 1919  
*Guilford, CT, Sept., 1966*, gelatin silver print,  
2014.30.7

**David MacEachran**, American, b. 1945  
*Untitled (nude)*, 1985, platinum print,  
2014.30.8

**Jeffrey D. Mathias**, American, b. 1951  
*Wupatki National Monument*, c. 1987,  
platinum print, 2014.30.9

**Stephen Paternite**, American, b. 1952  
*Lagoon, Stan Hywet Hall, Akron, Ohio, 1980*,  
gelatin silver print, 2014.30.10

**Frank Meadow Sutcliffe**, English, 1853-1941  
*Untitled (Whitby Sailors)*, c. 1905 (printed  
later), gelatin silver print, 2014.30.11

**Edward Weston**, American, 1886-1958  
*Church Door, Hornitos, CA, 1940*, gelatin  
silver print, 2014.30.12

**Minor White**, American, 1908-1976  
*Flowers and Ring; Cemetery: Ponce, Puerto  
Rico, 1973*, gelatin silver print, 2014.30.13

**Hope Zanes**, American, b. 1936  
*Untitled (woman in chair)*, 1987, platinum  
print, 2014.30.14

### Unknown Photographers

*Abner and Bertram*, York, Maine, gelatin  
silver print, n.d., 2014.30.15

*Untitled (house, Winchendon, MA), n.d.*,  
albumen print, 2014.30.16

*Untitled (Mac Doty at the Whitney Museum of American Art)*, n.d., gelatin silver print, 2014.30.17

**Lyman Kipp**, American, 1929-2014  
*Untitled*, 1965, ink on paper, 2014.20.18

**Gary Haven Smith**, American, b. 1948  
*Monoprint I/H*, 1989, monoprint, 2014.30.19

**Alma W. Thomas**, American, 1891-1978  
*Red Azaleas*, 1972, acrylic on paper, 2014.30.20

**Neil Welliver**, American, 1929-2005  
*Trout and Reflection*, 1980, hand-colored etching, 2014.30.21

*Birches*, 1982-83, color woodcut, 2014.30.22

**Stuart H. Williams**, American, 1950-2012  
*Untitled (bears)*, c. 1986, markers and pencil on paper, 2014.30.23

*Untitled (Lion Safari)*, c. 1986, markers and pencil on paper, 2014.30.24

**Bruno Civitico**, American, b. Italy 1942  
*Manchester New Hampshire*, c. 1987 (image: "Manchester Evening"), lithograph (poster), 2014.30.25

**Varujan Boghosian**, American, b. 1926  
*Varujan Boghosian / Collages and Constructions*, 1986 (image: "Orpheus"), for exhibition at the American Academy, Rome, Italy, February 4-26, 1986, lithograph (poster), 2014.30.26

*Varujan Boghosian / Collages and Constructions*, 1986 (image: "Pluto's Ledger"), for exhibition at the American Academy, Rome, Italy, February 4-26, 1986, lithograph (poster), 2014.30.27

#### Gift of G. Arnold Haynes

**Antonio Nicolo Gasparo Jacobsen**, American, 1850-1921  
*The State of Maine*, 1892, oil on canvas, 2014.31

**Grandma Moses** (aka Anna Mary Robertson Moses), American, 1860-1961  
*The Old Checkered House in Winter*, 1950, oil on wood, 2014.32

#### Gift of Eleanor Briggs

**Peter Milton**, American, b. 1930  
*Interiors II: Stolen Moments*, 1986, resist-ground etching and engraving, 2014.37

*Interiors III: Time with Celia*, 1986, resist-ground etching and engraving, 2014.38

#### Gift of the Artist

**John Parker Glick**, American, b. 1938  
*Place*, 2001, stoneware and porcelain, 2014.40abc

#### Gift of Ruth and David Waterbury

**David Ellsworth**, American, b. 1944  
*Vessel*, 1992, spalted silver maple burl, 2014.41.1

*Lunar Pot*, 1995, white oak, 2014.41.2

**Michelle Holzapfel**, American, b. 1951  
*Gemma Vase*, 1998, split leaf maple burl, 2014.41.3

**John Jordon**, American, b. 1950  
*Duo #II*, 2000, cherry and bronze, 2014.41.4ab

**Ron Kent**, American, b. 1931  
*Open Vessel*, 1999, Norfolk Island pine, 2014.41.5

*Open Bowl*, 1984, Norfolk Island pine, 2014.41.6

**David Lancaster**, American, b. 1951  
*Platter*, 1993, mahogany, 2014.41.7

**Johannes Michelson**, American (b. Denmark), b. 1945  
*Trail Boss*, 1994, maple, 2014.41.8

**Michael Mode**, American, b. 1946  
*Holding Steady*, 2003, amboynas, 2014.41.9

*Living Together*, 2000, wenge, holly and bloodwood, 2014.41.10

**Alan Stirt**, American, b. 1946  
*Ceremonial Bowl Series*, 1993, maple burl, 2014.41.11

Gift of Richard and Ann Thorner  
in honor of Peter J. Casey

**J. D. Lincoln**, American, b. 1933  
*Lotte Jacobi, Photographer*, 1975, gelatin silver print, 2014.49

Gift of Robert Flynn Johnson, San Francisco, CA, in memory of Robert Andrew Johnson and Minna Flynn Johnson

**James Anderson**, British, 1813-1877  
*Tivoli, Cascatelle*, c. 1870, albumen print, 2014.50

*Rome, The Piazza di Boco della Verita and Tempio di Ercole Vincitore*, 1860s, albumen print, 2014.51

**Ed Clark**, American, 1911-2000  
*John F. Kennedy and Caroline*, 1958 (printed later), gelatin silver print, 2014.52

**Robert Landry**, American, 1913-1960  
*Artillery Shells Stored in bays along quiet English road for D. Day invasion*, 1944 (printed later), gelatin silver print, 2014.53

**Paul Schutzer**, American, 1930-1967  
*Ethel and Bobby Kennedy with Children*, c. 1960 (printed later), gelatin silver print, 2014.54

**W. Eugene Smith**, American, 1918-1978  
*Truman with Dewey Beats Truman Headline*, 1948 (printed 1972), gelatin silver print, 2014.55

Gift of Robert K. Wiener

**Harold Edgerton**, American, 1903-1990  
*Milk Drop Coronet*, 1957, dye transfer print, 2014.56

*Bullet through Jack*, 1964, dye transfer print, 2014.57

Gift of Richard and Ann Thorner,  
in memory of Barbara I. Egan

**Unknown Photographer**, 19th Century  
*Silver Cascade*, n.d., albumen print, 2014.58

Gift of the Artist

**Dan Dailey**, American, b. 1947  
*Sketch for Nude Looking Back*, 2007, ink, 2015.1

Gift of Dr. and Mrs. R. Huntington Breed II and their sons Allen Huntington Breed and Robert Taylor Breed, in honor of Kimon Zachos, Trustee (1967-2014)

**Ilya Bolotowsky**, American, b. Russia, 1907-1981  
*Untitled (I.B. 675, Neoplastic Composition)*, 1952, oil on canvas, 2015.6

Gift of Richard and Anne Thorner

**Lotte Jacobi**, American, b. Germany, 1896-1990  
*Kitty Carlisle*, c. 1940, gelatin silver print, 2015.9

Gift of Robert Eshoo and Richard Thorner in honor of Maria Graubart:

**Gerda Peterich**, American, b. Germany, 1906-1974  
*Mills and Canal, Manchester, NH*, 1964, gelatin silver print, 2015.10

Anonymous Gift

**James Abbott McNeill Whistler**, American, 1834-1903  
*Limehouse*, 1871, etching, 2015.17

# DONORS & MEMBERS

---

## Currier Society (donations \$1,500+)

---

ANN BEHA AND ROBERT RADLOFF  
ARDATH BLAUVELT AND MARCIA  
DONALDSON  
RICHARD AND DOROTHY BOTNICK  
RICK AND RENEE BOTNICK  
DR. AND MRS. R. HUNTINGTON BREED II  
ELEANOR BRIGGS  
WAYNE CARDOZA  
JOHN AND JULIE CARTER  
LOUISE CARTER, IN MEMORY OF  
DAVID CARTER  
SHANNON CHANDLEY AND THOMAS J.  
SILVIA  
DWIGHT AND SUSI CHURCHILL  
DR. GEOFFREY CLARK AND MRS.  
MARTHA FULLER CLARK  
ARTHUR CLARKE AND SUSAN SLOAN  
ANN AND JAMES CONWAY  
CHARLES AND NANCY CORNELIO  
RAYMOND G. AND OLGA COTE  
HARTE AND ANN CROW  
JAMES AND DELORES DAVIS  
PAMELA DIAMANTIS AND MOREY  
GOODMAN  
PATRICK DUFFY AND JAYE GIBSON  
MICHAEL J. DUFFY II AND STEPHEN C.  
CORNISH  
STEPHEN AND SUSAN DUPREY  
M. CHRISTINE DWYER AND  
MICHAEL HUXTABLE  
DENISE D. AND WILLIAM H. DYER  
DR. LOUIS I. FINK AND DR.  
PAMELA L. GRICH  
TOM AND PEG GAILLARD  
PENELOPE AND JEFFREY GILBERT  
WILLIAM AND KATHY GILLET

JEAN AND DAVID GOTTESMAN  
MR. AND MRS. DANA HAMEL  
PAMELA A. HARVEY  
G. ARNOLD HAYNES  
JOHN DAVID AND TERRY HEINZMANN  
ELIZABETH AND JEREMY HITCHCOCK  
MARILYN AND ALAN HOFFMAN  
DONALD LOGAN AND PATRICIA  
HOWARD  
HAROLD AND BETSY JANEWAY  
DAVID AND DOROTHEA JENSEN  
TAMAR KRICHEVSKY AND MIKE ROSEN  
CHERYL AND MARK LIEBLING  
ROBERT AND DAWNE LITTERST  
IRENE R. LOVER  
ANNE LOVETT AND STEVE WOODSUM  
MARTHA AND CALVIN\* MASSEY  
ROSE MCCOLL  
JUDITH MCKENNA  
JULIE MIDDLETON AND BARRY WEST  
ANNE D. MILNE  
PETER AND ROBIN MILNES  
JOHN AND SUSAN MONSON  
MR. AND MRS. JOHN H. MORISON III  
DAVID J. AND KATHLEEN R. MURRAY  
CHARLES JOHN O'BYRNE  
PATRICK AND KENDRA O'DONNELL  
MS. JESSICA PAPANOLICAS  
PAM AND TED PARROT  
JESSIE POLLOCK  
THOMAS AND BARBARA PUTNAM  
ELIZABETH RICHTER AND MATTHEW  
STOVER  
DR. CAROL ROBEY AND DR. ROBERT  
OOT  
LINDA AND TERRY ROBINSON  
DAVID AND BARBARA ROBY  
CHRISTIANE ROTHWANGL AND HOSSEIN  
VAEZ  
HARRY AND BARBARA SHEPLER  
MICHAEL AND PEGGY SIMON

DAVID AND NIKE SPELTZ  
SHARON AND WILLIAM STEPHAN  
TOM AND CHRIS STEVENS  
SUSAN STRICKLER  
JOHN F. SWOPE  
RICHARD AND ANN THORNER  
LYDIA BOTTOME TURANCHIK AND  
STEPHEN TURANCHIK  
WILLIAM W. UPTON  
ANNE AND GEOFFREY VON KUHN  
ROBERT AND BINNEY WELLS  
KAREN WENDELL AND DOYLE SKEELS  
DR. AND MRS. ROBERT O. WILSON  
HELEN AND SUMNER WINEBAUM  
LINDA A. WITHERILL  
DR. JIM WOLCOTT AND MRS.  
JOCELYN JERRY-WOLCOTT  
KIMON\* AND ANNE ZACHOS

## Annual Fund (\$1,000+)

---

PAUL AND DEBBIE KINSON  
WILLIAM AND ANN MARVIN  
PATRICIA SULLIVAN MEYERS  
ELIZABETH RICHTER AND MATTHEW  
STOVER  
THE CURRIER FUND OF THE NHCF,  
ESTABLISHED BY MARGARET DOW  
MUDGE

## (\$500 - \$999)

PAM AND JOHN BLACKFORD  
DENICE AND JOAN BUSSIÈRE  
JOAN C. CAMANN  
DEBORAH DE PEYSTER AND JAMES  
MORRIS  
LYMAN AND DIANA DELANO  
KATHERINE M. HANNA  
JOHN P. HARROD

LUCIUS T. HILL  
PAUL AND ANNA GRACE HOLLOWAY  
MARY AND JANA HOWE  
CYNTHIA AND BRUCE KELLER  
MARK AND MARY LUNSFORD  
ANTHONY A. MCMANUS  
CLARA MIXTER  
MARTHA E. O'NEILL, ESQ  
FREDERICK AND ADELE PULTZER  
PAUL STALLER AND DEIDRE O'BYRNE  
BILL STELLING AND WILLIAM SIROTY  
CHARLES SULLIVAN AND SUSAN  
MAYCOCK  
VIRGINIA AND JOSEPH SZYMANOWSKI  
DAVIS AND PATRICIA THURBER  
JUDY UNGER-CLARK AND JOHN CLARK  
MARY WEINMANN  
DR. JIM WOLCOTT AND MRS. JOCELYN  
JERRY-WOLCOTT  
ANONYMOUS

**(\$250 - \$499)**

ROBERT AND EDITH CARR  
KATHERINE CLARK, IN HONOR OF CHRIS  
Dwyer  
BRADFORD AND KATHLEEN COOK  
SARAH AND PETER CROW  
PETER AND MARY GINIERES  
DAVID A. GLYNN  
DAVID AND MICHELLE GOLDMAN  
KAREN AND JOSEPH GRAHAM  
STUART AND DENISE HARNDEN  
DR. ROBERT P. HASSERJIAN  
MR. AND MRS. RICHARD S. HAZELTON  
JOHN DAVID AND TERRY HEINZMANN  
MARJORIE AND JAY HODES  
W. JEAN AND LUCILLE D. LAFLAMME  
CHRISTINE R. LOUIS  
GEORGE AND NAN MATHEY  
JOYCE AND ROBERT MCCRAY  
EDWARD AND SUE MORAN  
JUDITH AND JOHN RANSMEIER  
CARLTON F. REZENDES  
STELLA J. SCHECKTER  
JANE AND DAVID SODDERS  
ROBERT C. DEWEY AND PAMELA  
VAN ARSDALE

HON. AND MRS. MARK W.  
VAUGHN  
DIANE E. HOISEL WANGER

**(\$100 - \$249)**

CHERYL AND JAMES ADAMS  
NANCY W. ALCOCK-HOOD  
JOAN AND STEPHEN AMES  
DIANE Y. AUBREY  
MRS. JOHN M. BAKER  
SUSAN AND MICHAEL BARR  
JUDGE AND MRS. ARTHUR E. BEAN, JR.  
JOHN AND MERRILL BEAUCHAMP  
ROGER E. BELSON M.D. AND GRACE  
COHEN  
JAMES AND ELAINE BENNETT  
MS. LILA BERRY  
DAVID BETZ  
GLENN AND LOIS BOSTON  
BRYAN BOUCHARD  
HEATH AND MARY BOYER  
MEGAN BURKE-KIDDER  
RAYMOND AND MADGE BURTON  
STEPHEN CAMANN  
PHYLLIS H. CAREY  
DEBORAH AND MARK CHAG  
PETER AND JUDY CHEUNG  
BILL CHILDS  
DR. AND MRS. STEPHEN J. CLARK  
SHERRY AND FRANK COLLINS  
DIANE DALAMANGAS AND LAWRENCE  
GEORGE  
DOROTHY AND ROGER DAVIES  
MAURICE AND ELAINE DEMERS  
CURT AND ALICE DESOUZA LITTLE  
CYNTHIA DIAMANTIS  
MR. AND MRS. FREDERICK H.  
DOBROWOLSKI  
RICHARD AND KATHERINE DRISKO  
PAULINE AND RICHARD DUCHARME  
SYLVIO AND CECILE DUPUIS  
GERALD AND ROCHELLE DURETTE  
DEBORAH S. DUSULT  
JACK AND SHEILA EVJY  
DAVID AND SUSAN FELTUS  
ALETHEIA AND ALBERT FISCHER  
JOSLIN KIMBALL FRANK

JACK AND GINNY FRIBERG  
RICHARD AND ANN FRIEDMAN  
KATHARINE AND WILLIAM GAILLARD  
FRANCINE S. HALL  
CHARLES H. HAMILTON, M.D.  
SHERYL AND DENIS HAMMOND  
JACK AND SARA HARKINS  
JANE AND H.E. HARRINGTON, JR.  
JEANNE HERRICK  
DANIEL AND MICHAEL HINGSTON, INC.  
JOHN AND SUSAN HOWE  
EDWIN G. HUGHES III  
GERALD AND ANNE INDORF  
CAROL AND ROBERT INTRONE  
MS. MARGARET IVES  
JUDITH JELLINEK  
LEE JONES AND WILLIAM ROBINSON  
MARY JORDAN  
LOUIS AND MARY KAHN  
DOUGLAS AND RISA KEENE  
BEN AND KARINA KELLEY  
THE HONORABLE RUTH L. KLEINFELD  
MARK AND HEIDI KNIPE  
JAMES AND DONNA KRISHER  
ROSMARIE H. KROSCHE  
RICHARD AND NANCY KUDLER  
JOYDIP AND GARGI KUNDU  
ADDIE ANN LAMBARTH  
JANE AND STEVEN LARMON  
CAPT. AND MRS. ROBERT S. LEWELLEN  
KEVIN AND DIANE LONERGAN  
JOHN K. MARTIN  
KATHARINE AND JOHN MCCRILLIS  
SAM SMOOT AND KAREN McDONNELL  
MISTA AND STEPHEN McDONNELL  
FRANCIS MCFARLAND AND KATHLEEN  
RHODES  
MR. AND MRS. JOHN P. MCGIFFIN  
DOUGLAS AND NANCY MCININCH  
ELAINE MICHAUD  
DENNIS B. MIRES AND NANCY R. SLATE  
PATRICIA AND RICHARD MOLAN  
BARRY AND MAHROO MORGAN  
ELIZABETH AND STEVE MORGAN  
MARY C. MUDGE  
JAMES AND KATHRYN MUIRHEAD  
MS. GLORIA J. NEARY

JEAN PINCKNEY NELSON  
MILTON AND EDITH NOVAK  
TONI AND BILL PAPPAS  
MARK AND KATHRYN PARENTI  
GEORGE A. PERRY AND PAULA  
GAUDET  
DORIS PROULX  
MS. BETH RAYMOND  
DONNA MARIA REGIS  
CAROL AND JACK RESCH  
ANN S. RICHARDSON  
DIRK AND MARNIE RUEMENAPP  
DENNIS AND MAUREEN RYAN  
JOHN SAFFORD  
DEIRDRE L. SEGERSON  
MR. AND MS. WILLIAM SHUCART  
BETTE SOTIRIOU  
KAREN SOULE  
ANDREW SPAHR AND DONNA DUNLOP  
FREDERICK AND RUTH STAVIS  
JOLENE AND JON STEVENS  
NANCY SULLIVAN  
LARRY AND PIA SUNDERLAND  
MARGARET TALCOTT AND SCOTT  
SCHARER  
WILLIAM\* AND JEAN TALLMAN  
ANNE D. TWITCHELL  
JUDY AND JIM ULLMAN  
JAMES C. VAN DONGEN  
ELIZABETH AND STEPHEN VOLPONE  
RALPH WEBER  
JACK AND PAT WEEKS  
JAMES AND ANITA WHITEHEAD  
CHRISTOPHER AND ANN WILLIAMS  
ANONYMOUS(4)

**(up to \$99)**

SHAWN AND STACY ALLARD  
ANN AND BILL ARTHUR  
MERWYN AND CAROL BAGAN  
HARRIETT H. BAILEY  
ANNE BAIRD AND STEPHEN CAMPBELL  
FRED AND PATRICIA BALDWIN  
GEORGE AND CONSTANCE BARBARO  
DR. AND MRS. JAMES BARRETT  
BRUCE AND MICHELLE BAXTER  
DOROTHY A. BEAN

MR. AND MRS. PETER BECKETT  
THE REV. AND MRS. HAROLD E.  
BELIVEAU  
MR. AND MRS. LEONARD  
BENJAMIN  
DIANNE BISCHOFF  
GAYLE AND KENNETH BLAKE  
GLORIA V. BOUCHARD  
MICHAEL AND JUDITH BOUSQUET  
HELEN J. BRADLEY  
DANIEL BRAND  
RENEE BRENNER  
KATHLEEN AND THOMAS BRIGHT  
DORIS M. BUCKLEY  
EMMA BUNTROCK-MULLER  
DON AND KATY BURNS  
HOPE ZANES BUTTERWORTH  
JED CALLEN AND CAROL HESS  
MRS. PLATO L. CANOTAS  
MARIAN SCHWALLER CARNEY AND  
THOMAS CARNEY  
PEG CASE  
DOUGLAS AND LINDA CHAMBERLAIN  
DONALD AND DIANE CHASE  
SCOTT AND ANDREA CHATFIELD  
DOROTHY AND ARTHUR CHICADERIS  
MARTHA CLAPP  
WINFIELD CLARK  
MRS. HELEN P. CLOSSON  
MR. PHILIP COGGIN  
MARGARET G. COMISKEY  
WALLACE AND BARBARA COOPER  
THOMAS J. COPADIS  
NOAH COTE  
CONSTANCE AND HOWARD  
CUNNINGHAM  
DIANE CURRAN  
GLENN AND SUSANNE CURRIE  
BETH DAVIDSON  
DR. AND MRS. MARK DE ROSCH  
MS. LAURETTE DELISLE  
DORIS M. DESAUTEL  
MR. AND MRS. CHARLES R.  
DESMARAIS  
NANCY AND GREGORY DIAZ  
MS. SHAWNE DIAZ

DIANE DIGIROLAMO  
WAYNE AND TRISHA DIONNE  
MS. JULIA M. DISTEFANO  
ANTOINETTE AND ERIC DROUART  
MR. AND MRS. ROBERT DUFFY  
SUSAN DUGDALE AND THOMAS BLINN  
MRS. VIVIAN L. DUVAL  
AURORE AND SCOTT EATON  
MARK AND SUSAN EDELSTEIN  
WALT AND SUKI FAWCETT  
ELEANOR AND MARTIN FEUER  
LORNE AND NONA FIENBERG  
SUSAN L. FRANKEL  
ANNE S. FRANTZ\*  
PHYLLIS AND JOEL FRANZ  
PHILIP F. FRAZIER  
ELENORE FREEDMAN  
WILLIAM FREGOSI  
BLANCHE FRIEDMAN  
DIANA B. FROST  
GLENN FULLER  
EDITH GAMBEE  
REV. AND MRS. WILLIAM S. GANNON  
PATRICIA AND CHARLES GERHAN, JR.  
MR. AND MRS. JOHN H. GIFFIN JR.  
NORMA K. GILMORE  
WALTER AND ELEANOR GODDARD  
ANNA AND RICHARD GOETTLE  
MICHAEL GOLD AND MARY MECHLING  
RAYMOND GOULET JR.  
JANE AND JAMES GREEN  
DALE ATKINS  
CAROL AND JEROME GUERRIN  
MR. FRANK T. GUTMANN  
MRS. ANNE M. HAMILTON  
MICHÈLE HANSEN  
PAUL HOFF AND SELMA  
NACCACH-HOFF  
CAROL AND DAVID HULICK  
MRS. JAMES D. HUME  
SARAH AND DONALD HUNDGEN  
MARY ELLEN AND ALAN JACKSON  
CARL AND RUTH JACOBS  
ANN KANAMINE  
PAMELA AND ARIEH KATZ  
DAVID AND HARRIET KAUFMAN  
HOWARD AND JANET KEEGAN



JAMES AND PAMELA KELLY  
MRS. JANE KITTREDGE  
STEVEN KNIGHT  
CHARLES AND LYNN KOONTZ  
CAROL AND ROGER LaFontaine  
OVIDE AND JEANNE LAMONTAGNE  
SHERRY AND ROBIN LEAVER  
ANNE LEDERHOS AND DAVID BUTENHOF  
JAMES AND BARBARA BREWKA LEE  
ZHENG LEE  
RODNEY AND MAUREEN LOCKWOOD  
RAYMOND AND MARTHA LONGA  
MELANIE AND DAVID LUDWIG  
ROGER AND VIRGINIA LYDER  
STARR M. MANUS  
DR. AND MRS. RICHARD A.  
MARCUCCI  
BARBARA MARIANO  
JOHN F. MCCARTHY  
PETER McDONOUGH  
NANCY A. MCGAAN  
CHRISTINE McGRATH  
WILLIAM AND FRISKY McLANE  
MERCK & Co., INC.  
SHIRLEY MICUCCI  
MR. AND MRS. GERRY MILLER  
DAVID AND ROBIN MILLWARD  
SEMA MINASSIAN  
LORI MIX AND ALLEN MERRIMAN  
MS. EMILY W. MOORE  
MARY MORAN  
EDNA AND MARK MORDECAI  
IRYNA AND STEPHEN MORSE  
BRITT AND CORY MUNSTERTEIGER  
SUSAN AND ROBERT MURPHY  
KYLE AND SUSAN MURRAY  
AMY NICHOLLS  
ANNE AND JONATHAN NUTE  
PATRICK AND SHEILA O'BRIEN  
JOHN AND SARAH O'CONNOR  
LINDA AND WILL OTTERY  
PHYLLIS AND CLIFFORD OTTO  
TED AND RUTH PARENT  
RUTH AND NICK PERENCEVICH  
MS. CLAUDETTE C. PINARD  
JOAN AND DAVID PUSHEE  
GEORGINA REAGAN

LINDA AND SOL ROCKENMACHER  
PAUL SALEM  
BARBARA SANDS  
BILL AND JILL SCHOONMAKER  
SUSAN SCHULTZ  
JED AND NANCY SCHWARTZ  
STEVEN B. SCHWARTZ AND  
PAULA LEONARD-SCHWARTZ  
ANN C. SHEDD AND MARK MEESS  
MR. AND MRS. DAVID W. SHELDON  
BRUCE AND ANNE O. SMITH  
MS. FRED A. SPIRO  
FRANCESCA AND CLINT SPRINGER  
MRS. HERBERT B. STEBBINS  
KELLY AND BRUCE STOLLER  
JEANNE M. SULLIVAN  
EDMUND C. TARBELL  
SARAH TAUTKUS  
MS. JILL TEETERS AND MR. DAVE  
LAMOthe  
MARIA AND KIMBALL TEMPLE  
ROBERT AND BARBARA THINNES  
RICHARD AND KATHLEEN THURSTON  
MR. AND MRS. BRYANT F. TOLLES JR.  
JEAN TOPPING  
JAMES AND SANDRA TOWNSEND  
MS. MARY TROMBA  
NORMAN TRUDEAU  
THOMAS AND VIRGINIA TSIRIMOKOS  
JOYCE AND KENNETH VOLK  
MS. ROBERTA WADDELL  
MR. AND MRS. ROBERT W. WALKER  
SIDNEY A. WALKER  
LORRAINE S. WENGER  
MS. WENDY E. WHITE  
JOHN AND HELEN WILSON  
DR. AND MRS. ROBERT O. WILSON  
HENRY J. AND BARBARA H. WING  
MS. MARA R. WITZLING  
DOUGLAS AND LINDA WOOD  
FRANCES E. WRIGHT  
ALICE R. YANULIS  
SARA AND CRAIG YOUNG  
ANONYMOUS (8)

## In Memoriam

---

TRACEY AND CHARLES CARRIER, IN  
MEMORY OF DAVID DAVISON  
RONI AND JOSEPH DEVINCENTIS, IN  
MEMORY OF JEAN WYMAN

## Members

---

### Benefactor (\$750)

HOWARD AND JOAN BRODSKY  
PETER AND MARY GINIERES  
ROBERT AND JENNIFER GRUNBECK  
MICHELLE AND MATTHEW PIERSON  
LARRY AND BARBARA PITSCH  
BILL STELLING AND WILLIAM SIROTY  
CHARLES AND CHRISTINE ZOULIAS

### Patron (\$400)

J. PETER BRADY AND DESTINY DUMIRE  
JOAN C. CAMANN  
KAREN CLEMENT AND RICHARD A.  
JORDAN  
RICHARD COLMAN  
SARAH AND PETER CROW  
STANLEY AND CHERYL FRY  
PAUL GERRY  
MR. AND MRS. JAMES GOSSELIN  
MR. AND MRS. CHARLES GRAU  
JOHN P. HARROD  
LUCIUS T. HILL  
CAROLYN AND PHILIP HOLLMAN  
ERIC AND JULEE KATZMAN  
CYNTHIA AND BRUCE KELLER  
ELIN AND TUPPER KINDER  
PETER CONRAD AND JANICE  
MARCHUT CONRAD  
L.J. MARGESSON AND F.W. DANBY  
CLARA MIXTER  
RICHARD AND BARBARA MORGAN  
MARK AND KATHRYN PARENTI  
PATRICIA AND KEVIN REIGSTAD  
BENJAMIN SCHORE AND KATHERINE D.  
RINES  
BARBARA SIMON  
STEPHEN SMITH

VIRGINIA AND JOSEPH SZYMANOWSKI  
JUDY UNGER-CLARK AND JOHN CLARK  
ROBERT C. DEWEY AND PAMELA VAN  
ARSDALE  
HENRY E. VITUM  
ARTHUR AND ROBERTA WALMSLEY  
JENNIFER WISE

### Sponsor (\$200)

EDWARD ALOISE AND CLAUDIA RIPPEE  
JANET S. ANDERSON  
ANN AND CHUCK ANDON  
JULIE AND MICHAEL AVANT  
CAROL AND ROBERT BACKUS  
NANCY AND ROBERT BAKER  
MR. WILLIAM N. BANKS  
KARIN AND STEPHEN BARNDOLLAR  
SUSAN AND MICHAEL BARR  
GAIL BARRINGER  
SHERRON BASSETT AND JUSTIN SMITH  
CECILY BASTEDO  
MARGARET BEALE AND ROBERT JONES  
JOHN AND MERRILL BEAUCHAMP  
ROGER E. BELSON M.D. AND GRACE  
COHEN  
JAMES AND ELAINE BENNETT  
MS. BONNIE B. BENNETT  
JOSEPH AND SUSAN BENOIT  
CAROLYN AND RANDY\* BENTHIEN  
DANIEL AND CATHERINE BERUBE  
GIL AND ELIZABETH BIRON  
RON BOURGEAULT  
DR. DAVID J. STEINER AND DR. JAYNE  
E. BOYD  
TERRANCE AND TRINA BRAND  
MR. AND MRS. RONALD C. BROCKETT  
FRANK AND IRENE BUHL  
SUSAN CADY AND MICHAEL SCHMIDT  
JED CALLEN AND CAROL HESS  
ROBERT AND EDITH CARR  
EARL AND PATRICIA CARREL  
TRACEY AND CHARLES CARRIER  
KARIN AND PATRICK CEVASCO  
DEBORAH AND MARK CHAG  
CASSANDRA AND MARC CHASE

SCOTT AND ANDREA CHATFIELD  
GRAHAM AND TARA CHYNOWETH  
DR. AND MRS. STEPHEN J. CLARK  
GRENVILLE AND DEIRDRE CLARK  
PETER AND JEANNETTE CLEMONS  
ALAN AND SUZANNE CLEVELAND  
MRS. ELEANOR H. COLBY  
VIRGINIA COOK  
BRADFORD AND KATHLEEN COOK  
ELIZABETH COTE  
DONALD AND CECILE COUTURIER  
MARY COWAN  
MR. AND MRS. KENNETH COX  
JOEL COX  
DOUG AND DEBORAH CUMMINGS  
TATE AND AMELIA CURTI  
PENELOPE CURTIS  
SAHEED AND HANNAH DAHAR  
DONNA DALEY  
MS. MAUREEN DASTOUS  
BETH DAVIDSON  
MR. AND MRS. JOHN P. DAY  
DEBORAH DE PEYSTER AND JAMES  
MORRIS  
REV. ALAN G. DEALE  
LYMAN AND DIANA DELANO  
MARILYN AND DOUG DENMAN  
SARAH AND JAY DOUGLASS  
DARCY AND BRIAN DRAYTON  
PAULINE AND RICHARD DUCHARME  
GERALD AND ROCHELLE DURETTE  
WAYNE DUTCH  
GERALD AND KATHRYN EISEN  
THOMAS E. ERICKSON AND  
CHRISTINE E. REGAN  
LOUIS AND FRANCES ESPOSITO  
LINDSAY EVANS  
MR. FORREST S. EVARTS  
CHARLES AND CHARLOTTE  
FAULKNER  
LIZ AND CHRISTOPHER FAY  
MICHAEL FENLON  
EILEEN FINNIGAN  
ALLAN AND DEBORAH FISHER  
ROCHELLE AND DAVID FOGG  
ELENORE FREEDMAN  
MARY ALICE FULLERTON

LAURIE GABRIEL  
RICHARD AND SUZANNE GARRISON  
KARYN GATERMANN AND EL MAHDY  
HARB  
THOMAS AND EILEEN GETZ  
GEORGE AND MARY GEURAS  
ALICE GIANNI AND MICHAEL SMITH  
JOHN S. GIKAS\*  
DAVID AND MICHELLE GOLDMAN  
ELEANOR GOLDTHWAIT  
CHARLES AND JAYE GOODWIN  
KATHRYN GROWNEY  
JASON AND REBECCA HACKLER  
KARYN HAGEN  
JUDITH L. HAIGH AND FRED NORTON  
CHARLES HALL  
NANCY HAMORY  
JACK AND SARA HARKINS  
SCOTT H. HARRIS AND KAREN  
HORSCH  
LINDA AND JOSEPH HART  
SUSAN AND STUART HARTZ  
BRUCE A. HARWOOD  
DR. ROBERT P. HASSERJIAN  
DAVID HAWKINS  
MR. AND MRS. RICHARD S. HAZELTON  
MARY HEATH AND BOB LECLAIR  
BILL AND LORETTA HEUER  
ALEX AND PATRICIA HEWITT  
GARY AND PATRICIA HICKS  
DAVID AND ANGELA HILEY  
SHEILA AND JOHN HOGLUND  
DARDANA HOYT AND RENO ORSI  
CHARLES AND RITA HUNGLER  
JILL AND PIERCE HUNTER  
DAVID AND PATRICIA IMMEN  
GERALD AND ANNE INDORF  
VERNIS AND EMERALD\* JACKSON  
MR. MITCHELL B. JEAN  
JUDITH JELLINEK  
MR. AND MRS. KENNETH A. JONES  
MICHAEL AND DEBBIE KAUFMAN  
MARYJANE AND QUENTIN KEEFE  
LINDA AND JOHN KENNEY  
WENDY KETCHUM  
JOAN KINNE  
PAUL AND DEBBIE KINSON

HARRY AND SARAH KINTER  
 THE HONORABLE RUTH L. KLEINFELD  
 ALAN AND ELLEN KORPI  
 JOYDIP AND GARGI KUNDU  
 JONE LABOMBARDE  
 DOMINIQUE AND MARC LAPIN  
 STEPHANY AND RONALD LAVALLEE  
 CAROL LAVALLEE  
 JOERG AND CAROL LAVES  
 MARIA LAW  
 ALAN AND VIRGINIA LEACH  
 CAROL LEARY  
 MIKE AND BETTY LENEHAN  
 MR. AND MRS. KENNETH G.  
 LERNER  
 SHAULA AND DANA LEVENSON  
 ANNE AND THOMAS LEWIS  
 DAVID B. LEWIS AND HONEY WEISS  
 PEG AND ELLIOT LIPIN  
 MIKE AND JAN LITVIN  
 ROBERT AND KAREN SHEEHAN LORD  
 MARK AND MARY LUNSFORD  
 IRJA LUOMA AND MIKE LERER  
 DANIEL AND MARCY LYMAN  
 RICHARD AND BARBARA MALONEY  
 LIANE AND JAY MARCIANO  
 LAWRENCE AND ELIZABETH MARCOTTE  
 PETER MARTIN AND LYNN FREEMAN  
 FRANCIS MASON, PH.D.  
 JEFFREY AND KAREN MASORS  
 RICHARD AND KATHERINE MATTSON  
 FREDERICK MATUSZEWSKI  
 JOHN F. MCCARTHY  
 WILLIAM RAYMOND MCCARTHY  
 JOYCE AND ROBERT MCCRAY  
 SAM SMOOT AND KAREN MCDONNELL  
 MR. AND MRS. DAVID G.  
 MCDONOUGH  
 MEGAN MCINTYRE AND JEFF MATSON  
 JASON AND ELIZABETH MCKINNEY  
 PHILIP MCKITTRICK  
 FRED AND PAULA MCLAUGHLIN  
 FLORENCE MERRILL  
 CHRISTINE AND MAXIMILIAAN MICHELS  
 MARTHA AND COLE MILLS  
 DOROTHY AND LUNDY MINIOR  
 SANDY AND ROGER MINNICK

DENNIS B. MIRES AND NANCY R. SLATE  
 SYLVIA MISKOE  
 PATRICIA AND RICHARD MOLAN  
 CHERYL MOORE  
 CHRISTOPHER AND MARY MORGAN  
 ANDREW AND LINDA MORRIS  
 IRYNA AND STEPHEN MORSE  
 MAXINE K. MORSE  
 LAWRENCE AND EILEEN MOYER  
 ANTHONY AND KAREN NOCE  
 ERIC AND ELIZABETH NORDGREN  
 FRANCES NUTTER-UPHAM AND  
 WILLIAM UPHAM  
 EDWARD AND ELIZABETH O'CONNOR  
 JOHN AND SARAH O'CONNOR  
 MARTHA E. O'NEILL, ESQ  
 NICOLE AND JASON ONEAIL  
 DORIS AND VIRGIL ORFF  
 SANDRA OSTMAN  
 WILLIAM J. PANANOS  
 CAROLYN AND JOHN PAYZANT  
 MELISSA AND STEPHEN PENNELL  
 ROBIN PERINGER AND GLENN LEVESQUE  
 MR. AND MRS. STEVEN M. PERRAS  
 GEORGE A. PERRY AND PAULA  
 GAUDET  
 SUSAN AND JON POSNER  
 PAUL AND CATHY POULIOT  
 JULIA PREIS  
 ELIZABETH AND ROBERT PRESSMAN  
 BARBARA PRINGLE  
 DAVID AND JOHANNA PUBLOW  
 FREDERICK AND ADELE PULITZER  
 DWAYNE AND RACHEL PURVIS  
 CAROL RADIC AND COLM DARCY  
 HOBART AND BARBARA RAND  
 STEPHEN AND DEBORAH REICHHELD  
 FRANCES AND GERALD REILLY  
 SUSAN AND MARK REINER  
 KARILEE REINKING  
 ALAN AND JOAN REISCHE  
 GRACE REISDORF  
 CARLTON F. REZENDES  
 JAMES AND ANN ROBINSON  
 MICHAEL AND MARGARET ROGERS  
 KAREN L. ROSENBERG AND  
 WALTER L. MARONEY

DIRK AND MARNIE RUEMENAPP  
 GORDON AND BARBARA RUSSELL  
 PATTERSON AND NAN RUSSELL  
 JANET AND GEORGE SAMUELS  
 MARLENE SANTIAGO  
 DEBORAH AND RICHARD SARGENT  
 DAVID SARRAZIN  
 JOYCE SATURLEY  
 CLAIRE AND DAN SCANLON  
 EDWINA AND MONROE SCHARFF  
 BILL AND JILL SCHOONMAKER  
 MR. MICHAEL SCHROEDER  
 MARK SCHWARTZBERG AND SASHA  
 KUFTINEC  
 RABBI JOSHUA L. SEGAL AND KAREN  
 SATZ  
 MR. AND MRS. DAVID W. SHELDON  
 JAMES SHELTON  
 JOHN SHONLE AND SHIRLEY SMITH  
 DON AND MOIRA SIEKER  
 STEVEN SILBERBERG  
 GIL AND JEANNE SLATER  
 STEPHEN AND ANN SMITH  
 RICHARD AND SUSAN SMITH  
 ART AND KATHRYN SPRINGSTEEN  
 ED AND ANN SPURR  
 JAMES AND MARY STARKE  
 DAVID STEELMAN AND VIRGINIA THEO-  
 STEELMAN  
 BOB STEGMAIER  
 MARJORIE AND RON STOCK  
 DEBORAH L. STONE  
 MR. PAUL C. SULLIVAN AND MS.  
 NANCY R. LORD  
 CHARLES SULLIVAN AND  
 SUSAN MAYCOCK  
 KATE AND SCOTT SUSSMAN  
 REV. ROBERT O. SWANSON  
 RACHEL AND TIMOTHY SWEENEY  
 DAVID SWETT  
 MARGARET TALCOTT AND SCOTT  
 SCHARER  
 WILLIAM\* AND JEAN TALLMAN  
 SARAH L. TAPPAN AND MARK LONGO  
 ROBERT TEELING  
 MS. JILL TEETERS AND MR. DAVE  
 LAMOTHE

UTE AND ROY TELLINI  
CAROL AND PAUL TINGLEFF  
BRIAN AND HELENA TITILAH  
JUNE TRISCIANI AND JEFFREY ROGERS  
KRISTIN VAUGHAN  
HON. AND MRS. MARK W. VAUGHN  
CAROLYN S. VON RECKLINGHAUSEN  
ASHLEY ANNE WARNER  
DAVID WEIR  
LUKE WENGER  
LORRAINE S. WENGER  
DAVID AND JANE\* WHITE  
MARGARET WIEGAND  
FRANCES AND RALPH WIGGIN  
ANNE WILBUR  
DR. SUSANNA S. WILKENS  
RICHARD AND FRANCES WINNEG  
MR. AND MRS. DANIEL WOLF  
HARRY AND ANNE\* WOLLMAN  
DOUGLAS AND LINDA WOOD  
KATHARINE WOODMAN-MAYNARD  
ROBERT AND LORRAINE WORRELL  
PATRICIA B. WRIGHT  
NICOLE AND PHILIP WU  
DONALD AND GAIL YORK  
MRS. MARTHA YOUNG-DONOHUE  
ANONYMOUS

## **Institutional Members**

---

MASSACHUSETTS COLLEGE OF  
PHARMACY AND HEALTH  
MOORE CENTER SERVICES  
NEW ENGLAND COLLEGE  
NEW HAMPSHIRE INSTITUTE OF ART  
RIVIER UNIVERSITY  
SAINT ANSELM COLLEGE  
SOUTHERN NH UNIVERSITY  
UNH MANCHESTER

## **Matching Corporations**

---

FM GLOBAL FOUNDATION  
THE GE FOUNDATION  
LINCOLN FINANCIAL FOUNDATION  
THE WALT DISNEY COMPANY  
FOUNDATION

## **Business Partners**

---

### **Benefactor (\$10,000+)**

FIDUCIARY TRUST OF NEW ENGLAND  
HITCHINER MANUFACTURING Co., INC.  
TD BANK

### **Sponsor (\$5,000+)**

BANK OF AMERICA MERRILL  
LYNCH  
DYN  
PEOPLE'S UNITED BANK

### **Underwriter (\$2,500+)**

BANK OF NEW HAMPSHIRE  
CHINBURG PROPERTIES  
COLART AMERICAS, INC.  
LOUIS KARNO & COMPANY

### **Supporter (\$1,000+)**

BAKER NEWMAN & NOYES  
BELLWETHER COMMUNITY CREDIT UNION  
BONFIGLIO, KILEY AND ASSOCIATES  
CHRISTIE'S  
DARTMOUTH HITCHCOCK  
FAIRPOINT COMMUNICATIONS  
FINCH & MALONEY PLLC  
HARVEY CONSTRUCTION COMPANY  
HEMENWAY & BARNES, LLP  
SHEEHAN PHINNEY BASS + GREEN  
LEAGUE OF NH CRAFTSMEN  
R.C. BRAYSHAW AND COMPANY, INC.  
ST. MARY'S BANK

### **Associate (\$500+)**

ARNOLD IMAGING  
ASH STREET INN  
CAMPO ENOTICA  
CURBSTONE FINANCIAL  
MANAGEMENT CORPORATION  
KOHL'S  
OHIO NATIONAL FINANCIAL  
SERVICES  
REPUBLIC

## **Business Partner (\$250)**

BIRCH HILL TERRACE  
CENTRAL PAPER PRODUCTS COMPANY  
DENNIS MIRES, P.A., THE ARCHITECTS  
E & R LAUNDRY AND DRY CLEANERS  
NORTHEAST DELTA DENTAL

## **Exhibition Support**

---

### *M.C. Escher: Reality and Illusion*

DWIGHT AND SUSI CHURCHILL  
DYN  
NETHERLAND-AMERICA  
FOUNDATION  
PUTNAM FOUNDATION  
THOMAS AND BARBARA  
PUTNAM  
TD BANK

### *Still Life: 1970s Photorealism*

BOTNICK FAMILY FOUNDATION  
M. CHRISTINE DWYER AND  
MICHAEL HUXTABLE  
HITCHINER MANUFACTURING Co., INC.  
DAVID AND DOROTHEA JENSEN

### *From Birds to Beasts: Audubon's Last Great Adventure*

PEOPLE'S UNITED BANK  
JOHN F. SWOPE  
ANONYMOUS

### *General Exhibition Support*

LOUISE CARTER  
DAVID AND BARBARA ROBY  
RIVERSTONE RESOURCES, LLC

### *Collections Support*

MRS. ROBERT M. DOTY

### *Reference Library & Archives Support*

JOHN F. SWOPE

## Program Support

---

BANK OF NEW HAMPSHIRE  
LINCOLN FINANCIAL FOUNDATION, INC.  
NH CHARITABLE FOUNDATION  
PEOPLE'S UNITED BANK  
ROTARY CLUB OF NASHUA-WEST  
TD CHARITABLE FOUNDATION  
NANCY AND ROBERT BAKER  
MARJORIE AND DONALD BURKE  
DESSALEE AND BROADY, COOK, IN  
MEMORY OF BRUCE H. McCOLL  
MARILYN DAVISON  
DEANNA AND STEVE HART, IN MEMORY  
OF BRUCE H. McCOLL  
BRUCE McCOLL AND RANE HALL,  
IN MEMORY OF BRUCE H. McCOLL  
ROSE McCOLL, IN MEMORY OF  
BRUCE H. McCOLL  
CATHERINE AND PETER McGOVERN  
MEGAN McINTYRE AND JEFF MATSON  
SANDY AND ROGER MINNICK

## Art Center Annual Fund

---

CHERYL AND JAMES ADAMS  
THOMAS R. AND PATRICIA C. BARSTOW  
KATHY M. CARD AND LARRY GAGNON  
KELLIE M. CARLIN AND COURTNEY  
CORTEZ  
SUSAN AND GEORGE CARLISLE  
PETER AND JUDY CHEUNG  
DWIGHT AND SUSI CHURCHILL  
SHERRY AND FRANK COLLINS  
RUTH M. CONLEY  
COURTNEY CORTEZ  
DR. AND MRS. MARK DE ROSCH  
PAMELA DIAMANTIS AND MOREY  
GOODMAN, IN MEMORY OF KIMON  
S. ZACHOS  
PATRICK DUFFY AND JAYE GIBSON  
TOM AND PEG GAILLARD  
PETER AND MARY GINIERES  
MICHAEL HALL AND PAT GLASCOCK  
PAMELA A. HARVEY

EMILY HIGGINS AND GEORGE  
GRIGOROPOULOS  
ELIZABETH AND JEREMY HITCHCOCK  
MARJORIE AND JAY HODES  
SHAULA AND DANA LEVENSON  
BRUCE McCOLL AND RANE HALL  
ROSE McCOLL  
ANNE D. MILNE  
CHERYL MOORE  
IRYNA AND STEPHEN MORSE  
JEAN PINCKNEY NELSON  
THOMAS AND BARBARA PUTNAM  
JUDITH AND JOHN RANSMEIER  
JOHN F. SWOPE  
VASILIA AND DAVID TOOLEY  
ANONYMOUS

## Art Center Support

---

THE BROWN FOUNDATION, INC. OF  
HOUSTON  
RIVERSTONE RESOURCES, LLC  
RICHARD AND PAMELA WINSTON  
ELSIE A. BROWN FUND, INC.

## Zimmerman House

---

KATHLEEN R. BOYCE  
DARLENE FRIEDMAN  
NH LAND AND COMMUNITY HERITAGE  
INVESTMENT PROGRAM

## Operating Support

---

NH STATE COUNCIL ON THE ARTS AND  
THE NATIONAL ENDOWMENT FOR  
THE ARTS  
ANONYMOUS

## Bequests

---

MR. MARSTON CHASE\*  
CHARLES E. IRELAND\*  
DANIEL A. RAIZES\*

## Kimon S. Zachos Acquisition Fund, in memory of Kimon Zachos

---

THOMAS W. ADAMS  
ANAGNOST COMPANIES  
CATHY ARREDONDO  
PAUL AND MARY AVERY  
MR. MILTON BAKOGIANNIS  
STEPHEN AND GAIL BARBA  
THERESA BARIBEAU  
WILLIAM AND JANE BEEBE  
CAROLYN AND RANDY\* BENTHIEN  
CHARLES AND BARBARA BICKFORD  
PAM AND JOHN BLACKFORD  
ROSLYN BLOCK  
RONALD AND JOAN BOUFFORD  
BRADY SULLIVAN PROPERTIES  
MURIEL AND EDWARD BROAD  
HOWARD AND JOAN BRODSKY  
HOPE ZANES BUTTERWORTH  
JOAN C. CAMANN  
STEPHEN CAMANN  
CARROLL COUNTY YMCA  
CAMP HUCKINS  
SYLVIA CHAPLAIN  
ROBERT AND SHERYL CHENEY  
COTTON CLEVELAND AND JOHN  
GARVEY  
SHERRY AND FRANK COLLINS  
PETER AND JANE COOKE  
DAVID AND JUDY CORBIT  
RAYMOND G. AND OLGA COTE  
LINDA AND BILL COTTER  
NANCY A. COUNTY  
SALLY CRAWFORD AND PETER WELLS  
ELISABETH CROSS AND CHUCK TILGNER  
CURT AND ALICE DESOUSA LITTLE  
PAMELA DIAMANTIS AND MOREY  
GOODMAN  
MRS. ROBERT M. DOTY  
CAROLINE K. AND WALTER C. DUEGER  
JR., M.D.

PATRICK DUFFY AND JAYE GIBSON  
JOHN AND COLLEEN DUPRE  
M. CHRISTINE DWYER AND MICHAEL  
HUXTABLE  
CHARLES EAGER  
JESSICA AND DAVID EBER  
BARBARA ECONOMIDES  
STEPHEN AND ANN FOSTER  
ELENORE FREEDMAN  
JAMES FREIBURGER AND ELEANOR  
DUNFEY FREIBURGER  
RICHARD AND ANN FRIEDMAN  
PETER GABRIELLI  
JOAN GOSHGARIAN AND VAN MCLEOD  
JEAN AND DAVID GOTTESMAN  
FRANK AND JOAN GRAF  
THE GRANITE YMCA  
JAMES AND LYNN GRANT  
ROSALIND GRANT  
RICHARD AND JOANNE GUSTAFSON  
GRACE W. HARDE  
JANE AND H.E. HARRINGTON, JR.  
BRUCE AND INTA HASENKAMP  
DEBORAH HAUSER AND DAVID BOOTH  
ANDRE AND RITA HAWAUX  
SHIRLEY AND PETER HENDERSON  
J. MICHAEL AND MARILYN HICKEY  
JAMES E. HIGGINS  
CAYCE HILL AND JOE ZULLO  
MS. LOUISE HIRSHBERG  
HITCHINER MANUFACTURING CO., INC.  
MARILYN AND ALAN HOFFMAN  
SALLY H. HOLLAMAN  
PETER AND JOAN HOOD  
JAMES AND ANNE HOWARD  
HOYLE TANNER & ASSOCIATES INC.  
DAVID AND DOROTHEA JENSEN  
ELIZABETH AND THOMAS KELSEY  
SALLY J. KENISTON  
ELAINE AND SHEL KRASKER  
JOANNE LAMPREY  
MRS. LOHNES  
ED MACKAY  
GEORGE MANIAS  
WILLIAM AND ANN MARVIN  
GEORGE AND NAN MATHEY  
MARK AND SANDRA MAZUR

DIANE MCCLAVE  
MARY S. MCGOWAN  
MCLANE, GRAF, RAULERSON &  
MIDDLETON, PA  
DEBORAH O'BRIEN MERCER AND  
LEE MERCER  
MERRIMACK STREET GARAGE INC.  
MILLYARD COMMUNICATIONS, INC.  
ANNE D. MILNE  
PETER AND ROBIN MILNES  
MOORE CENTER SERVICES  
REBECCA MUDGE  
JAMES AND KATHRYN MUIRHEAD  
NATHAN WECHSLER & COMPANY  
JANET NIXON  
LESLIE NIXON AND LEE NYQUIST  
NH CHARITABLE FOUNDATION  
NORTHEAST DELTA DENTAL  
L. DOUGLAS AND ELLEN M. O'BRIEN  
SUSAN AND DANNY O'BRIEN  
EDWARD AND ELIZABETH O'CONNOR  
NAN O'CONNOR AND ELLEN LITMAN  
PATRICK AND KENDRA O'DONNELL  
JOHN AND DARLENE OBLAK  
WILLIAM J. PANANOS  
GOLFO PAPAPOPOULOS  
MARTHA M. PENNELL  
DOROTHY PETERSON  
DR. WALID YASSIR AND MS. LISA  
PROSSER, PH.D.  
THOMAS AND BARBARA PUTNAM  
ANN RAMSAY-JENKINS  
RATH, YOUNG AND PIGNATELLI  
DICK RAWLINGS  
JOAN AND LEONARD REED  
STEPHEN AND CATHERINE RENO  
JANE ROSENBERG AND JOHN KERN  
JON AND KATHY ROSS  
HAL RUBIN AND ALINE HARWOOD  
RUBIN  
RICHARD AND MARY LOU SAWYER  
THOMAS SEDORIC  
THE SHAKER SOCIETY  
SHEEHAN PHINNEY BASS + GREEN  
HARRY AND BARBARA SHEPLER  
MR. AND MRS. LEO H. SKELLCHOCK  
SOUTHERN NH UNIVERSITY

ANDREW SPAHR AND DONNA DUNLOP  
JUDGE AND MRS. NORMAN H. STAHL  
ARTHUR AND DAWN STAVROS  
JOHN AND ROXANN STERGIUO  
HECTOR AND DOTTIE STOKES  
SUSAN STRICKLER  
KURT AND ELAINE SWENSON  
VIRGINIA AND JOSEPH SZYMANOWSKI  
JAMES AND BRENDA TEBBETTS  
PRISCILLA A. THOMAS  
RICHARD AND ANN THORNER  
RAYMOND AND BARBARA TRUNCELLITO  
BARBARA TSAIRIS  
PHOTIOS TSANTOULAS  
ERNEST AND KATHERINE TSOUROU  
PENELOPE UPTON  
WILLIAM W. UPTON  
THOMAS AND LINDA VEBLEN  
CAROLYN VINICA  
BRIDGET AND IRWIN WAKCHER  
LINDA PATCHETT AND BRIAN WALSH  
BRENDA AND JOSEPH WATTS  
JACK AND PAT WEEKS  
JOHN AND SHEILA WELCH  
MS. MARILYN WILSON  
HELEN AND SUMNER WINEBAUM  
RICHARD AND FRANCES WINNEG  
EDWARD WOLAK  
KENNETH AND GAYLE WOLFE  
MR. AND MRS. JAMES YAKOVAKIS  
MR. AND MRS. JAMES S. ZACHOS  
SAMUEL AND LINNEA ZACHOS  
ANONYMOUS

## Heart of the Arts Fund-the-Future

---

DAVID AND JINJUE ALLEN  
TINA AND CARL ANDRADE  
NICHOLAS AND ALICE BENTLEY  
HOWARD AND JOAN BRODSKY  
A.J. CAPOWSKI  
JIM AND GAIL CAROLAN  
ERIC AND JENNIFER CHINBURG  
GRAHAM AND TARA CHYNOWETH  
ANN AND JAMES CONWAY  
ROBYN AND ROBERT COTTON  
KENT DEVEREAUX  
PAMELA DIAMANTIS AND MOREY  
GOODMAN  
PATRICK DUFFY AND JAYE GIBSON  
STEPHEN AND SUSAN DUPREY  
M. CHRISTINE DWYER AND  
MICHAEL HUXTABLE  
TOM AND PEG GAILLARD  
RICHARD AND ANITA GALWAY  
MARYLIZ GEFFERT AND GARY EPLER  
LEN GERZON  
JOAN GOSHGARIAN AND VAN  
MCLEOD  
JEAN AND DAVID GOTTESMAN  
KAREN AND JOSEPH GRAHAM  
JOHN DAVID AND TERRY HEINZMANN  
JEANNE HERRICK  
ELIZABETH AND JEREMY HITCHCOCK  
DONALD LOGAN AND PATRICIA  
HOWARD  
DAVID AND DOROTHEA JENSEN  
JOERG AND CAROL LAVES  
JOSEPH AND JUDITH MALOY  
PETER AND ROBIN MILNES  
ELIZABETH AND STEVE MORGAN  
DAVID J. AND KATHLEEN R. MURRAY  
MARTHA E. O'NEILL, ESQ  
KERRY AND DAVID SCHLEYER  
AUSTIN SHAPARD  
HARRY AND BARBARA SHEPLER  
SHARON AND WILLIAM STEPHAN  
TOM AND CHRIS STEVENS  
SUSAN STRICKLER  
ARTHUR SULLIVAN

KAREN AND PETER TEBBENHOFF  
JUNE TRISCIANI AND JEFFREY ROGERS  
LISA AND ALEX WALKER  
WILLIAM ZORN

## Heart of the Arts Sponsors

---

FIDUCIARY TRUST OF NEW ENGLAND  
CHINBURG PROPERTIES  
LOUIS KARNO & COMPANY  
COMMUNICATIONS, LLC  
PRIME, BUCHOLZ & ASSOCIATES, INC.  
BAKER NEWMAN & NOYES  
BONFIGLIO, KILEY & ASSOCIATES  
HARVEY CONSTRUCTION CORPORATION  
SHEEHAN PHINNEY BASS + GREEN PA  
FRANCIS LEGAULT AND CHRISTOPHER  
LOGAN  
DENNIS MIRES, P.A., THE ARCHITECTS  
VINEXTRA INC

## Noon Year's Eve Sponsors & Supporters

---

CHILDREN'S HOSPITAL AT  
DARTMOUTH HITCHCOCK  
FINCH & MALONEY  
MANCHESTER RADIO GROUP  
NEW HAMPSHIRE PUBLIC TELEVISION  
PARENTING NEW HAMPSHIRE

## Henry Melville Fuller Legacy Society

---

THE HENRY MELVILLE FULLER LEGACY SOCIETY OF THE CURRIER MUSEUM OF ART RECOGNIZES INDIVIDUALS WHO HAVE REMEMBERED THE MUSEUM IN THEIR ESTATE PLANS. WHILE THE MUSEUM HAS BEEN THE RECIPIENT OF MANY BEQUESTS, UNTIL NOW, IT HAS NOT HAD A FORMAL AVENUE THROUGH WHICH TO COMMEMORATE THESE LEGACY GIFTS. BELOW ARE THOSE INDIVIDUALS WHO HAVE PROVIDED FOR THE MUSEUM IN THEIR ESTATE PLANS. WE ARE DEEPLY GRATEFUL FOR THEIR INTENTION AND HONORED TO CARRY OUT THEIR WISHES IN PERPETUITY.

NANCY AND ROBERT BAKER

WARREN G. BENDER\*

ELEANOR BRIGGS

WAYNE CARDOZA

MS. CECILY CLARK

RAYMOND G. AND OLGA COTE

PAMELA DIAMANTIS AND MOREY GOODMAN

PATRICK DUFFY AND JAYE GIBSON

M. CHRISTINE DWYER AND MICHAEL HUXTABLE

DENISE D. AND WILLIAM H. DYER

TOM AND PEG GAILLARD

MAY GRUBER\*

PAMELA A. HARVEY

DONALD LOGAN AND PATRICIA HOWARD

DAVID AND DOROTHEA JENSEN

DENISE M. JOHNSON\*

TAMAR KRICHEVSKY AND MIKE ROSEN

IRENE R. LOVER

JOHN F. MCCARTHY

JEAN P. McMILLEN

MR. AND MRS. JOHN H. MORISON III

THOMAS AND BARBARA PUTNAM

HARRY AND BARBARA SHEPLER

STEPHEN AND ANN SMITH

JOHN F. SWOPE

WILLIAM\* AND JEAN TALLMAN

RICHARD AND ANN THORNER

WILLIAM W. UPTON

JOAN H. WHITE\*

HELEN AND SUMNER WINEBAUM

MRS. MARJORIE MILNE WINSTON\*

HARRY AND ANNE\* WOLLMAN

KIMON\* AND ANNE ZACHOS

\*DECEASED



KIMON ZACHOS



HENRY MELVILLE FULLER





From left to right: Member's Opening of *From Birds to Beasts: Audubon's Last Adventure*; theatre KAPOW performs in ARTiculate play reading series; Exploring the Romare Bearden: *A Black Odyssey* exhibition.

# SPECIAL EXHIBITIONS, PROGRAMS & SPONSORS

---

## ***Dutch and Flemish Masterworks from the Rose-Marie and Eijk van Otterloo Collection***

**September 1, 2013 - January 5, 2015**

*Organized by the Currier Museum of Art*

## ***Romare Bearden: A Black Odyssey***

**March 29, 2014 – August 17, 2014**

*Organized by the Smithsonian, the Romare Bearden Foundation and Estate, and DC Moore Gallery; sponsored by the Stavros Niarchos Foundation. The Currier's presentation of this exhibition was sponsored by Hitchiner Manufacturing Co., Inc., Optima Bank, Dwight & Susi Churchill, and Wilton Consulting Group, LLC.*

## ***Focus Exhibition: A Naval Officer's Albums: Travel Photography in the 19th-century Exhibitions***

**July 7, 2014 - October 27, 2014**

*Organized by the Currier Museum of Art Reference Library and Archives*

## ***M.C. Escher: Reality and Illusion***

**September 20, 2014 – January 5, 2015**

*Organized by the Currier Museum of Art and the Herakleidon Museum, Athens, Greece. This exhibition and related educational programs were sponsored by TD Charitable Foundation and TD Bank; Dyn; The Badger Fund and the New Hampshire Charitable Foundation; and by individual support from Dwight and Susi Churchill and Barbara and Thomas Putnam.*

**Focus Exhibition: *Through a Director's Eyes:  
The Collection of Robert "Mac" Doty***

**November 26, 2014 - March 30, 2015**

*Organized by the Currier Museum of Art Reference Library and Archives*

***Still Life: 1970s Photorealism***

**January 24, 2015 – May 3, 2015**

*Organized by the Yale University Art Gallery.*

*The Currier's presentation of this exhibition is supported by Hitchiner Manufacturing Company; the Botnick Family Foundation; M. Christine Dwyer and Michael Huxtable; and David and Dorothea Jensen.*

***Painterly to Precise: Richard Estes at the Currier***

**February 14, 2015 - June 15, 2015**

*Organized by the Currier Museum of Art*

**Focus Exhibition: *Modern Architecture in Manchester:  
The Frank Lloyd Wright Designed Zimmerman House***

**May 1, 2015 - August 10, 2015**

*Organized by the Currier Museum of Art*

***From Birds to Beasts: Audubon's Last Great Adventure***

**May 23, 2015 – August 30, 2015**

*Organized by the Currier Museum of Art and New Hampshire Audubon.*

*The Currier's presentation of this exhibition was sponsored by People's United Bank; John F. Swope; and an anonymous donor.*

## PROGRAMS

---

**Free Saturday Morning Admission for NH residents from 10:00-noon**

*Supported in part by Citizens Bank and Cogswell Benevolent Trust*

**Currier After Hours, Thursday late night events**

*Underwritten by People's United Bank*

**Alzheimer's Café, 2nd Wednesdays, free to attend**

*Supported by Home Instead Senior Care*

**Yellow Bus Fund**

*Supported by Bank of New Hampshire and Lincoln Financial Foundation*

**Nashua (4th graders) and Manchester (5th graders) Field trip programs**

*Supported by Lincoln Financial Foundation*

**ARTiculate Playreading Series**

*Supported by the New Hampshire Humanities Council*

# TRUSTEES

M. Christine Dwyer, *President*  
Dwight D. Churchill, *Vice President*  
Harry Shepler, *Treasurer*  
John H. Morison III, *Clerk*  
Lucy Fowlkes Breed  
Deborah de Peyster  
Pamela Diamantis  
Stephen Duprey  
Margaret Gaillard  
Jean Gottesman  
Elizabeth Hitchcock  
David A. Jensen  
Peter R. Milnes  
Barbara B. Putnam  
Nike Speltz  
John F. Swope  
Richard Thorner  
William W. Upton

## EMERITI

Raymond G. Cote  
Patrick Duffy  
Elenore Freedman  
Anne Milne  
Kendra Stearns O'Donnell  
Davis P. Thurber  
Helen Winebaum

# ADVISORY COUNCIL

Deborah de Peyster, <i>Chair</i>	Laurel McClead
Jolene Stevens, <i>Vice Chair</i>	Patricia Meyers
Cheri Adams	Julie Middleton
Sherron Bassett	Martha Mills
Loraine Bernard	Liz Morgan
Ann Conway	Michelle Pierson
Robyn Cotton	Jessie Pollock
Amelia Curti	Carol Robey
Michael J. Duffy II	Linda Robinson
Kristen Enman	Bill Stelling
Eric Fleming	Sharon Stephan
Mary Forssell	Margaret Talcott
Joslin Kimball Frank	Rod Tenney
Terry Heinzmann	June Trisciani
John Herman	Pamela van Arsdale
Jeanne Herrick	Danielle York
Ben Kelley	
Erin Kerwin	
Amanda McGowan Lacasse	
Jane Larmon	
Joerg Laves	
Shaula Levenson	

# GUILD OF VOLUNTEERS EXECUTIVE COMMITTEE

Dennie Dyer, *Executive Chair*  
Nancy Baker, *Executive Vice-Chair*  
Angela Hoke, *Treasurer*  
Theia Fischer, *Secretary*  
Nancy McGaan, *Guild Communications Chair*  
Nancy Johnson, *Meetings and Programs Chair*  
Barbara Shepler, *Guild Membership Chair*  
Roberta Lavey, *Museum Docents Chair*  
Sandra Chandonnet, *Museum Shop Chair*  
Fran Nutter-Upham, *Representative-at-Large*  
Marilyn Watson, *Zimmerman House Docents Chair*



Guild of Volunteers Executive Committee at the annual luncheon with Karen Graham, Director of Operations and Human Resources, and Lynn Thomson, Associate Educator for Adult and Family Audiences.



Currier Staff 2015 Photo.

# STAFF

## DIRECTOR'S OFFICE

Susan Strickler  
Barbara Jaus

## BUSINESS OFFICE

Sherry Collins  
Carey Cahoon  
Alana Johanson  
Paula Senneville

## GUEST EXPERIENCE

Heidi Norton  
Tracey Carrier  
Valerie Laker  
Melanie Larson  
Sean McGovern  
Hillary Murray  
Michael Piantedosi  
Ryan Sanborn  
Stephen Stanley

## CURATORIAL

Andrew Spahr  
Jeff Allen  
Samantha Cataldo  
Korrena Cowing  
Karl Hutchins  
Cynthia Mackey  
Karen Papineau  
Meghan Petersen  
Kurt Sundstrom  
Aimie Westphal

## DEVELOPMENT

Paul Staller  
Stacy Broulidakis  
Sara Turner  
Jennifer Minicucci

## PR & MARKETING

Steven Konick  
Neva Cole  
Vanessa DeZorzi

## EDUCATION

Leah Fox  
Jane Seney Oneail  
Aimee Piccolo  
Lynn Thomson  
Megan McIntyre

## OPERATIONS

Karen Graham  
Lisa Solange  
Pavlopoulos  
Kate Sussman

## CAFÉ

Joseph Sylvester  
Amy Bettencourt  
Steve Hudon  
Sara Larson  
Michael Miller  
Devinne Mullaney

## CAFÉ cont.

Deanna Parenteau  
Benjamin Tate  
Poplar  
Corey Sylvia

## FACILITIES

Nelson Goddard  
Robert Desrochers  
Matthew  
McMahon  
Ron Sklutas  
Michael Somers

## SECURITY

Evan Benoit  
Lauren Dadmun  
Keyandra Barchey-  
Robinson  
Matthew Dadmun  
Jerrilee Maille  
Nathan St. Pierre  
Lucas Troy  
Shane Waller  
Mina Al Rais  
Jessalyn Benson  
Emile Boire  
Nicholas Bugieda  
Tyler Card  
Richard Colantuoni  
Cormac Doherty  
Katherine Donovan

## SECURITY cont.

Russell Gebo  
Dan Griffin  
Henry Griffin  
John Griffin  
Joey Jiminez  
Kimberly Johnson  
Rae Laven  
John Maguire  
Eric Maille  
Jennifer Marasca  
Theophilus Martey  
Agam Neiman  
Anthony  
Provenzano  
Jennifer Robinson  
Majed Sabri  
Sydney Specht  
Douglas Tyler  
Jeff Valluzzi

## ART CENTER

### Administration

Bruce McColl  
Sadie Barton  
Linn Krikorian  
Rachel Montroy  
Jeanne Neverisky  
Angela Hyde

## Faculty

Marek Bennett  
Patricia Benson  
Beth Brisson  
Daniele  
Caradonna  
Ellie Clough  
Nancy Craig  
Pamela DiFloures  
Corey Doherty  
Ann Domingue  
Danielle Gosselin  
Jerry Holbert  
June Latti  
Corie Lyford  
Joseph Montroy  
Kristine Nyhan  
Amy O'Boyle  
John  
O'Shaughnessy  
Holly Rousseau  
Monique Staples

# FINANCIAL STATEMENT

## Condensed Statement of Financial Position

ASSETS	2015	2014
Investments	\$83,867,900	\$85,156,754
Receivables	125,166	604,072
Other current assets	473,093	445,459
Property, plant and equipment, net of depreciation	17,008,164	17,755,603
<b>TOTAL ASSETS</b>	<b>\$101,474,323</b>	<b>\$103,961,888</b>

## LIABILITIES AND NET ASSETS

Current liabilities	\$328,375	\$316,269
Net assets:		
Unrestricted	2,738,052	1,704,513
Temporarily restricted	47,905,838	51,439,048
Permanently restricted for operations and acquisitions	50,502,058	50,502,058
<b>TOTAL LIABILITIES AND NET ASSETS</b>	<b>\$101,474,323</b>	<b>\$103,961,888</b>

## Supplemental Schedule of Quid Pro Quo Operating Activities

June 30, 2015 and 2014

SUPPORT AND REVENUE FOR OPERATIONS	2015	2014
Investment income used for current year's operations	\$2,136,491	\$2,231,599
Transfers from named funds	171,068	127,062
Proceeds from Special Event designated for next year's operations	50,000	0
Museum	1,481,726	1,255,738
Art Center	260,757	254,026
Exhibitions	140,354	131,500
Zimmerman House	67,481	85,940
<b>TOTAL SUPPORT AND REVENUE FOR OPERATIONS</b>	<b>4,307,877</b>	<b>4,085,865</b>

## OPERATING EXPENSES

Museum	3,490,023	3,386,290
Art Center	318,452	319,200
Exhibitions	230,761	143,278
Zimmerman House	108,150	127,878
General and administrative	111,189	97,1110
<b>TOTAL OPERATING EXPENSES</b>	<b>4,258,575</b>	<b>4,073,756</b>
Proceeds from special event designated for next year's operations	50,000	
Proceeds & revenue restricted to or designated for current year's operations in excess of expenses	(\$698)	\$12,109