

CURRIER  
MUSEUM  
*of* ART

FY 2014

# Annual Report





# Contents



**2014**

## Inside the Annual Report

Dear Members & Friends.....	1-3
Loans to Other Museums .....	4
Acquisitions & Gifts .....	5-10
Donors & Members.....	11-17
Exhibitions & Sponsors .....	18
Trustees, Advisory Council & Guild of Volunteers.....	19
Staff .....	20
Financial Statement.....	21

### IMAGES

COVER: Learning & exploring at *Signs From the Sixties: Robert Indiana's Decade*.

CONTENTS: Children play at the Currier's Noon Year's Eve event.

## IMAGES

ABOVE: Member at the opening of *Africa Interweave: Textile Diasporas*.

BELOW: Tour of *Signs of the Sixties: Robert Indiana's Decade*



*"Being able to speak with veterans and view the artwork helped me connect what I learned in the classroom to the actual events of the war,"* —Senior at Sanborn Regional High School regarding *Visual Dispatches from the Vietnam War*

*"If I had the opportunity to return to the Museum with my family I would show them American history because they weren't born in America."* —Manchester 5th grade student

## Dear Members & Friends:

The Currier had a strong Fiscal Year 2014 with a diverse array of exhibitions, engaging public programs and some outstanding acquisitions to our world-class collections.

The groundbreaking fall exhibition, *Visual Dispatches from the Vietnam War*, coincided with the 50th anniversary of the start of American involvement in the Vietnam War and featured many iconic images that defined the harsh realities of the conflict and shaped public opinion about the war during the late 1960s and early 1970s. Almost all 35 photographs came from the Museum's collection. A devoted group of veterans, who guided staff on the content of the exhibition and generously shared their personal stories with more than 700 students, provided compelling and memorable context.

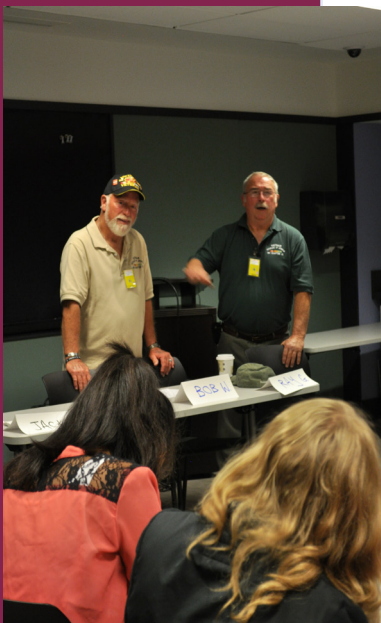
Breathtakingly beautiful textiles and regalia in the exhibition *Africa Interweave: Textile Diasporas* from the collections of the Samuel P. Harn Museum of Art at the University of Florida highlighted the fascinating cultural exchanges that took place during the last century among countries in Africa, and with nations in Europe and Asia. It also provided us with opportunities to reach out to some of the region's new immigrants and refugees from Africa.

The winter exhibition, *Signs from the Sixties: Robert Indiana's Decade*, featured two recent acquisitions: the major painting *Decade Autoportrait*, 1963, and a related portfolio of ten original screen prints, all by this well-known Maine-based Pop artist. We also presented the work of a regional artist in the Museum-wide installation *Exploring the Currier Inside Out: Andrew Witkin, Among Others*, which responded both playfully and intellectually to the collections and the Museum's history.

## IMAGES

ABOVE: Visitors explore the *Romare Bearden: A Black Odyssey* exhibition.

BELOW: Milford High students have a dialogue with Vietnam War veterans.



We marked the milestone 75th anniversary of the Currier Art Center with a show of work by current and past students and by a group of current and former faculty, including Robert Eshoo, who led the Art Center studio program for 37 years. Art Center Director Bruce McColl highlighted significant moments in the history of the Art Center throughout the exhibition. A creative suite of classes for kids and adults conducted within the exhibition space underscored the Art Center's exceptional educational offerings.

The year's exhibitions concluded with a dynamic and revealing installation of collages and watercolors by one of the 20th century's great modernist artists in *Romare Bearden: A Black Odyssey*. The Currier recently acquired one of the large collages in this exhibition, and it traveled with the show across the country. Almost 3,000 New Hampshire students visited this special exhibition. School tours, led by trained docents, help to build students' visual literacy and critical thinking skills.

The Currier launched several new initiatives in FY14. The highly successful Heart of the Arts benefit, co-chaired in its first year by Jean Gottesman and Sharon Stephan, netted more than \$75,000 to help support art education. A series of three play readings presented by theatre KAPOW, *Time Stands Still* by Donald Margulies; *The American Dream* by Edward Albee; and *Red* by John Logan, offered new insight into special exhibitions and specific works in the collections. The Young Friends group was launched to introduce young professionals to the resources of the Currier. Alzheimer's Café is a monthly social gathering for those experiencing memory loss and for their caregivers. Art Center outreach programs have gained momentum working with the Elliot Hospital Pediatrics Department and with Inti Soccer Academy. Inti is an educational organization based in downtown Manchester that has built community among youth from many diverse backgrounds through sports, and now through classes at the Art Center.

The collection was generously enriched through the bequest of long-time Currier friend and collector May Gruber, who died in March 2013, just days short of her 101st birthday. Her bequest included works on paper by Elizabeth Murray, Jim Hodges, David Hockney, Michael Mazur, Pablo Picasso and William Wiley. Through the Henry Melville Fuller Acquisition Fund we purchased significant works by John Marin, Chuck Close and Walton Ford. We acquired a seminal sculpture by Harvey Littleton, an early innovator of the studio glass movement, and a chest of drawers by New Hampshire Furniture Master Ted Blachly. Both were purchased using the Ed and Mary Scheier Acquisition Fund.



Two important long-term loans enhanced the Currier's own holdings. The first is a group of six seventeenth century Dutch paintings from the world-renowned collection of Rose-Marie and Eijk van Otterloo; the second loan included major paintings by Renoir, Monet and van Gogh and a sculpture by Maillol from an anonymous collector. We were honored to share these masterworks with audiences here in New England.

During the fiscal year, we completed a project funded by the National Endowment for the Arts that added significant content to our collections database. Eighty-six essays on contemporary and European works were authored by curators, educators and outside scholars; 142 labels for existing works in the permanent collection were added to online object files; and exhibition histories for more than 3,000 objects were entered. This effort, ably led by Associate Registrar Cindy Mackey makes new, substantive information available to the worldwide public.

And finally, we achieved a long-held goal to unobtrusively add air conditioning to the Frank Lloyd Wright-designed Zimmerman House. This not only makes visits more comfortable for visitors, but also helps protect the contents of the house from high humidity in the summer. Our Guild of Volunteers and an LCHIP grant, along with others, helped to make this project possible.

It is always a pleasure to thank our many members and supporters who fund exhibitions, programs and general operations and to recognize the dedication of the Guild of Volunteers, Advisory Council and Board of Trustees. Their contributions of time, funds and expertise make the Currier stronger and more responsive to the communities it serves. We hope to see you at the Currier in the coming year. Thank you!

## IMAGES

ABOVE: Visitors tour the newly updated Frank Lloyd Wright-designed Zimmerman House.



### ***M. Christine Dwyer***

President  
Board of Trustees



### ***Susan Strickler***

Director and CEO



# Loans to Other Museums



Romare Bearden, *Battle with Cicones*, 1977, Collage of various papers with graphite on fiberboard

## **Smithsonian Institution Traveling Exhibition Service**

**Venues: Chazen Museum of Art, University of Wisconsin, Madison; Michael C. Carlos Museum, Emory University, Atlanta, GA**

### ***Romare Bearden: A Black Odyssey***

*Romare Bearden, American, 1911-1988*

*Battle with Cicones*, 1977

Collage of various papers with graphite on fiberboard,  
Museum Purchase: The Henry Melville Fuller Fund, 2012.28

## **Studio Museum Harlem, New York, NY** ***The Shadows Took Shape***

*Laylah Ali, American, b. 1968*

*Untitled*, 2005

Ink and pencil on paper, Museum Purchase: The Henry Melville Fuller Acquisition Fund, 2012.22

*Untitled*, 2005

Ink and pencil on paper, Museum Purchase: The Henry Melville Fuller Acquisition Fund, 2012.23

## **Mattatuck Museum, Waterbury, CT** ***Albert Bierstadt in New York and New England***

*Albert Bierstadt, American, b. Germany, 1830-1902*

*View Near Newport*, 1859

Oil on canvas, Bequest of Henry Melville Fuller, 2002.20.4

## **Danforth Art Museum, Framingham, MA**

### ***Jon Imber: Carry On***

*Jon Imber, American, 1950-2014*

*Self Portrait*, 1984

Oil on canvas, Museum Purchase: the Rosmond DeKalb Fund, 1985.1

## **Nationalgalerie Staatliche Museen zu Berlin** ***Marsden Hartley – The German Paintings***

*Marsden Hartley, American, 1877-1943*

*Raptus*, c. 1913

Oil on canvas, Gift of Paul and Hazel Strand in Memory of Elizabeth McCausland, 1965.4

## **Parrish Art Museum, Water Mill, NY**

### ***Jennifer Bartlett: Place – A Survey of Paintings and Sculpture***

*Jennifer Bartlett, American, b. 1941*

*Air: 24 Hours, Eleven P.M.*, 1991-92

Oil on canvas, Museum Purchase, 1992.35



Marsden Hartley, *Raptus*, 1913, oil on canvas



# Acquisitions & Gifts

## Gifts

### Bequest of Barbara Milliken

Edwin and Mary Scheier, American,  
1910-2008, 1908-2007

*Vase with Figure Designs*, c. 1950s, stoneware,  
2013.37

*Bowl*, c. 1960s, stoneware, 2013.38

*Platter with Abstract Figure Designs*, late  
1940s-early 1950s, earthenware, 2013.39

### Gift of Dr. Lucius Hill in honor of his wife, Nancy Hill

Dale Chihuly, American, b. 1941

*Ocean Macchia*, 2002, glass, 2013.41

### Bequest of May B. Gruber

Jennifer Bartlett, American, b. 1941

*Shadow*, 1984, etching on four sheets, 2013.43.1

Pierre Bonnard, French, 1947-1967

*Les Boulevards*, 1900, color lithograph, 2013.43.2

Félix Hilaire Buhot, French, 1847-1898

*Westminster Clock Tower (Westminster Bridge)*,  
c. 1884, etching and drypoint, 2013.43.3

Giovanni Benedetto Castiglione, Italian,  
1609-1664

*Tobit Burying the Dead*, c. 1647-51, etching,  
2013.43.4

David Hockney, British, b. 1937

*Sun, from Weather Series*, 1973, lithograph and  
screenprint, 2013.43.5

Jim Hodges, American, b. 1957

*Like This 12*, 2002, cotton on cotton, 2013.43.6

Rockwell Kent, American, 1882-1971

*Susanna (The Foot Bath)*, 1929, lithograph,  
2013.43.7

Armin Landeck, American, 1905-1984

*Tenement Walls*, 1942, etching, 2013.43.8

Michael Mazur, American, 1935-2009

*Vine Tree, Fall*, 1983, pastel on paper, 2013.43.9

Malcolm Morley, British, b. 1931

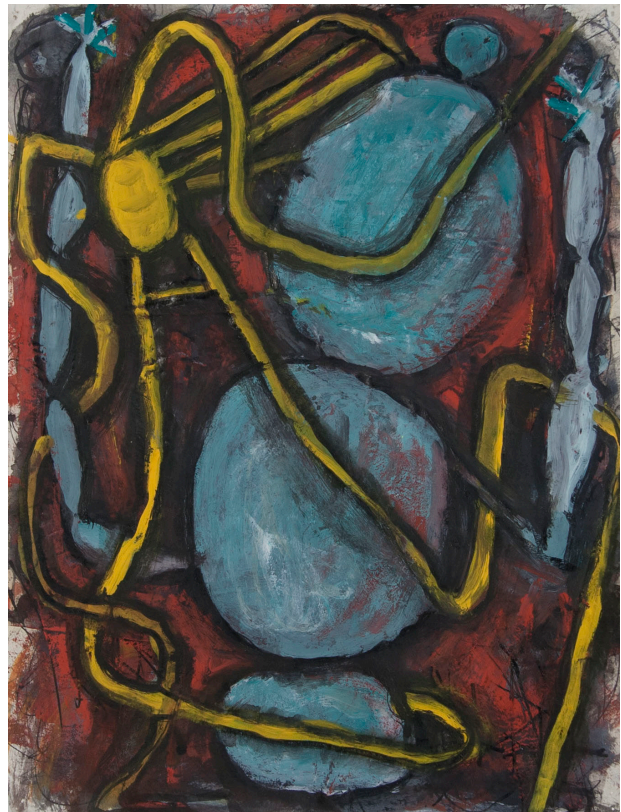
*Seastroke*, 1984, watercolor, 2013.43.10

Elizabeth Murray, American, 1940-2007

*Depot, Summer*, 1992, casein, collage, colored pencil  
and graphite on paper, 2013.43.11

*Untitled, New York*, 1992, casein and collage on paper,  
2013.43.12

*Untitled, Spring*, 1991, casein, ink and collage on paper,  
2013.43.13



Elizabeth Murray, *Untitled, Spring*, 1991, casein, ink and collage  
on paper, 2013.43.13. Bequest of May B. Gruber. © 2014 The  
Murray-Holman Family Trust / Artists Rights Society (ARS),  
New York.

# Acquisitions & Gifts



Rembrandt Harmensz van Rijn, *Old Man with a Divided Fur Cap*, 1640, etching and drypoint. Bequest of May B. Gruber.

## Gifts

### Bequest of May B. Gruber

Pablo Picasso, Spanish, 1881-1973

*Femme Accoudée, Sculpture de Dos et Tête Barbue* (plate 71, from *La Suite Vollard*), 1933, etching, 2013.43.14

Marco Pitteri, Italian, 1702-1786, after

Giovanni Piazzetta (Italian, 1682-1784)

*S Philippus Neri*, c. 1757-1764, etching, 2013.43.15

Rembrandt Harmenz. van Rijn, Dutch, 1606-1669

*Old Man with a Divided Fur Cap*, 1640, etching and drypoint, 2013.43.16

James Jacques Tissot, French, 1836 -1902

*Soiree d'Été*, 1881, etching and drypoint, 2013.43.17

James Abbott McNeill Whistler, American, 1834-1903

*Gants de Suède*, 1890 (printed c. 1904), lithograph, 2013.43.18

William T. Wiley, American, b. 1937

*Hound Harbor Forecast*, 1977, watercolor, 2013.43.19

### Gift of Miss Linda A. Witherill

Elizabeth Nutt, American, b. 1940

*Miniature Tea Set*, 1990s, silver, carnelian finials, 2013.44.1-11

### Gift of Robert Flynn Johnson in Memory of Robert Andrew Johnson and Minna Flynn Johnson

André Kertész, American, b. Hungary, 1894-1985

*New York*, 1972, vintage contact print, 2013.45

Charles Jones, English, 1866-1959

*Peony*, c. 1900, gelatin silver print, 2013.46

*Sweet William*, c. 1900, gelatin silver print, 2013.47

*Gladiola*, c. 1900, gelatin silver print, 2013.48

Gordon Parks, American, 1912-2006

Photographs from the Brazil series for LIFE Magazine, 1961 (printed later)

*Child with bowl of food*, gelatin silver print, 2013.49

*Man and children walking in favela*, gelatin silver print, 2013.50

*Flavio da Silva and his brother Mario on the boardwalk, Rio de Janeiro*, gelatin silver print, 2013.51

*Louis Armstrong*, 1955 (printed later), gelatin silver print, 2013.52

*Louis Armstrong*, 1955 (printed later), gelatin silver print, 2013.53

William Klein, French (b. United States), b. 1928

*Paris, Student Riots*, 1968, gelatin silver print, 2013.54



# Acquisitions & Gifts

## Gifts (continued)

### **Gift of Robert Flynn Johnson in Memory of Robert Andrew Johnson and Minna Flynn Johnson**

**Carl Mydans, American, 1907-2004**

*Woman and children beside man's body*, Yeosu-Suncheon Rebellion, Korea, series for LIFE Magazine, 1948 (printed later), gelatin silver print, 2013.55

*Two of Sunchon's Bereaved Women Mourn a Loyal Korean*, Yeosu-Suncheon Rebellion, Korea, series for LIFE Magazine, 1948 (printed later), gelatin silver print, 2013.56

*South Korean Soldiers Detain a Group of Young Female Communist Prisoners*, Yeosu-Suncheon Rebellion, Korea, series for LIFE Magazine, 1948 (printed later), gelatin silver print, 2013.57

*Refugees Cross into South Korea*, March, 1951 (printed later), gelatin silver print, 2013.58

*Survivors of the Fukui Earthquake, Japan*, 1948 (printed later), gelatin silver print, 2013.59

*Fukui Earthquake, Japan (man with cart)*, 1948 (printed later), gelatin silver print, 2013.60

*Gen. Douglas MacArthur in his plane, "The Baatan"* (printed later), c. 1950, gelatin silver print, 2013.61

*Gen. Douglas MacArthur on the Bridge of the Flagship U.S.S. Mount McKinley*, 1950 (printed later), gelatin silver print, 2013.62,

**David Douglas Duncan, American, b. 1916**  
*American Marines Race Past a Dead Enemy Soldier in Korea*, September, 1950 (Cover photograph for *This Is War!*) (printed later), gelatin silver print, 2013.63

*Self Portrait*, 1950 (printed later), gelatin silver print, 2013.64

*On Duty atop the Command Bunker, Pfc. Joseph Marshall, 18, of Alexandria, LA* (Khe Sanh, Vietnam, Feb.), 1968 (printed later), gelatin silver print, 2013.65  
*Corporal Leonard Hayworth* (illustrated in *This Is War!*), c. 1950 (printed later), gelatin silver print, 2013.68

*Portrait of a Marine, Korean War* (Chosin Reservoir, Korea, winter), (illustrated in *This Is War!*), 1950 (printed later), gelatin silver print, 2013.69

**John Dominis, American, 1921-2013**

*Engineers Hack Ice Away from Pontoon Bridge before Demolishing It, Korea*, (LIFE, Jan. 15, 1951), 1951 (printed later), gelatin silver print, 2013.66

**Max Desfor, American, b. 1913**

*Soldiers behind sandbags, Seoul, South Korea*, 1950 (printed later), gelatin silver print, 2013.67

**Margaret Bourke-White, American, 1904-1971**

*Self Portrait*, 1943 (printed later), gelatin silver print, 2013.70

*Self Portrait – Korean War* (printed later), c. 1950, gelatin silver print, 2013.71



Margaret Bourke-White, *Self Portrait*, 1943, gelatin silver print, Gift of Robert Flynn Johnson in Memory of Robert Andrew Johnson and Minna Flynn Johnson.

# Acquisitions & Gifts

## Gifts (continued)

### Gift of Robert Flynn Johnson in Memory of Robert Andrew Johnson and Minna Flynn Johnson

Loomis Dean, American, 1917-2005

*Andrea Doria, August 1, 1956*, 1956 (printed later), gelatin silver print, 2013.72

### Gift of Ruth and David Waterbury

Mike Shuler, American, b. 1950

*Bowl*, 1993, snakewood, 2013.74

Michael Mode, American, b. 1946

*Jar for the Gardens of Shalimar*, 1995, pink ivory, ebony, kingwood, holly, cocobolo, East Indian rosewood, 2013.75 a,b

### A gift from Marissa, Chloe, Michele and Doug. With special thanks to Dr. David Stahl and Dr. Kurt Sundstrom for inspiring us to continue our collecting journey.

Peter Milton, American, b. 1930

*Interiors VII: The Train from Munich*, 1991, etching and engraving, 2013.76

### Gift of the artist

Tomie dePaolo, American, b. 1934

from *Mother Goose Story Streamers*, 1984:

*Jacket, front and back*, transparent ink and liquid acrylic on paper, 2013.78.1

*Baa, Baa, Black Sheep*, transparent ink and liquid acrylic on paper, 2013.78.2 a and b

*Jack & Jill*, transparent ink and liquid acrylic on paper, 2013.78.3 a and b

*Little Miss Muffet*, transparent ink and liquid acrylic on paper. 2013.78.4 a and b

### Gift of Richard and Ann Thorner in memory of Catherine L. Hammond

Robert P. Eshoo, American, b. 1926

*Untitled*, 1980, watercolor, 2013.79

### Gift of the Andy Warhol Foundation for the Visual Arts, Inc.

Andy Warhol, American, 1928-1987

*Little Red Book 121*, 1969, album of 20 Polaroid photographs, 2014.1.1-21

### Gift of Richard and Ann Thorner

Duncan Steck, American, b. 1929

A group of 19 gelatin silver photographs,

*Times Square, NY*

*Untitled (skyscraper and brick building)*

*Danville, PA*, c. 1970s

*Inner Harbor, Baltimore*, c. 1970s-80s

*41st St. New York Public Library in Background*, 1968

*41st Street Library at 5th Ave. in Background*, 1967-68

*Untitled (street scene - adopt a homeless dog or cat table)*

*Untitled (street scene - Nixon Now sign)*, 1972

*Democratic Convention, NYC*, 1976 or 1980

*Madison Ave., Winter*, 1970s

*Untitled (Central Park in rain)*

*Washington Square, Chess*, 1960s

*Magazine and Paper Stand, 57th and Sixth Ave.*, 1970s

*Indoor Circus, NY Coliseum, Columbus Circle*, 1970s

*Lower Manhattan, NYC, Fulton St. and Lower*

*Broadway*, 1998

*Chinatown*, 1973

*Untitled (street fair)*

*Greenwich Village Shoeshine*, 1960-61

*Untitled (street scene - man sitting on car)*

2014.6.1-19

### Unknown Photographer

*White House in the First Lady's Garden: Teacher of the Year*, 1983, gelatin silver print, 2014.7



# Acquisitions & Gifts

## Gifts (continued)

### Gift of Tom Kokx

after Harry Fenn, American, b. England,  
1837-1911, (engraved by various artists)  
"The White Mountains" section of the book *Picturesque America*, 1872, parts 7 and 8 (pp.149-172), containing  
14 wood engravings: 2014.21.1-14  
*The White Mountains, from the Conway Meadows*  
*Mount Washington, from the Conway Road*  
*Elephant's Head, Gate of Crawford Notch*  
*The Willey Slide*  
*Gate of the Crawford Notch*  
*The Descent from Mount Washington*  
*Tuckerman's Ravine, from Hermit's Lake*  
*Crystal Cascade*  
*Mount Washington, from top of Thompson's Falls,*  
*Pinkham Pass*  
*Emerald Pool, Peabody-River Glen*  
*Profile Mountain*  
*The Flume*  
*Cliffs Above Dismal Pool*  
*Column Rock, Dixville Notch*

### Henry Melville Fuller Acquisition Fund

Tomie dePaola, American, b. 1934  
*Hey Diddle Diddle*, 1983, transparent ink and liquid  
acrylic on paper, 2013.36.1 and 2

Laurie Simmons, American, b. 1949  
*Coral Living Room with Lilies*, 1983, cibachrome print,  
2013.40

Unknown Artist, French, late 18th century  
*Cleopatra Captured by Roman Soldiers after Marc  
Antony's Death*, oil on canvas, 2013.42

Prissiller Newhall, American, 1787-1858  
*Portsmouth Sampler*, 1807, silk on linsey-woolsey,  
2013.73

David W. Butterfield (attributed to), American,  
1844-1933

*Franconia Notch, White Mountains, N.H.*, c. 1885,  
albumen photograph, 2014.2

O. Louis Guglielmi, American, 1906-1956  
*Sisters of Charity*, 1937, oil on masonite, 2014.4

John Marin, American, 1870-1953  
*Movement in Red*, 1946, oil on canvas, 2014.5

Jacob Lawrence, American, 1917-2000  
*Builders Three*, 1991, lithograph, 2014.8

after Winslow Homer, American, 1836-1910  
*The Coolest Spot in New England – Summit of Mount  
Washington*, 1870, (from Harper's Bazar, July 23, 1870),  
wood engraving, 2014.9

Robert Hughes, American, 1915-2004  
*Untitled*, c. 1970, wood, 44 x 35 x 13 in., 2014.10



John Marin, *Movement in Red*, 1946, oil on canvas,  
Henry Melville Fuller Acquisition Fund.

# Acquisitions & Gifts

## Henry Melville Fuller Acquisition Fund

after William Henry Bartlett, English,  
1809-1854

*Mount Jefferson, (From Mount Washington)*, 1839,  
(engraved by Robert Brandard, English, 1805-1862,  
steel engraving, 2014.11

*Mount Washington, And The White Hills (From Near  
Crawford)*, 1838, (engraved by S.T. Davies, dates  
unknown), steel engraving, 2014.12

after George Loring Brown, American,  
1814-1889

*The Crown of New England*, 1869, (engraved by  
George Girdler Smith, American, 1795-1878), steel  
engraving, 2014.13

after Harry Fenn, American, b. England,  
1837-1911

*The Mount Washington Road. (White Mountains)*,  
1872,

(engraved by Samuel Valentine Hunt, American  
England, 1803-1893), steel engraving, 2014.14

*Mount Washington From The Conway Road, 1872*,  
(engraved by Joseph S. Harley, American, 19th  
century, for Picturesque America, 1872), wood  
engraving, 2014.15

after Winslow Homer, American, 1836-1910

*The Summit of Mount Washington*, 1869, (from  
Harper's Weekly, July 10, 1869), wood engraving,  
2014.16

Chuck Close, American, b. 1940

*Self-Portrait*, 2007, screenprint, 2014.17

Ludwig Hohlwein, German, 1874-1949

*Peruvian Cotton/Cardens Wonalcet Company*,  
*Nashua NH*, 1912, color lithograph (poster), 2014.18

Walton Ford, American, b. 1960

*Visitation*, 2004, color etching, soft-ground, aquatint, spit-  
bite, and drypoint, 2014.19

*Swadeshi-cide*, 1998-99, hardground and softground  
etching, aquatint, spit-bite aquatint, drypoint and roulette,  
2014.20

## The Ed and Mary Scheier Acquisition Fund

Harvey Littleton, American, 1922-2013

*Lemon/Blue Lyrical Movement*, 1988, barium/potash  
glass with multiple cased overlays of Kugler colors,  
2013.77 a-e

## In Honor of Susan Leidy, Deputy Director of the Currier Museum of Art, 1988 – 2011

Ted Blachly, American, b. 1951

*Curly Maple Chest*, 2014, sugar maple, Bolivian  
rosewood, white oak, quarter-sawn red maple, Sitka  
spruce, 2014.3





# DONORS & MEMBERS

## DONORS

### Currier Society

#### (donations \$1,500+)

Ann Beha and Robert Radloff  
Ardath Blauvelt and Marcia Donaldson  
Rick and Renee Botnick  
Richard and Dorothy Botnick  
Dr. and Mrs. R. Huntington Breed II  
Eleanor Briggs  
Wayne Cardoza  
David\* and Louise Carter  
Shannon Chandley and Thomas J. Silvia  
Dwight and Susi Churchill  
Dr. Geoffrey Clark and Senator Martha Fuller Clark  
Arthur Clarke and Susan Sloan  
Charles and Nancy Cornelio  
Raymond G. and Olga Cote  
Harte and Ann Crow  
James and Delores Davis  
Pamela Diamantis  
Patrick Duffy and Jaye Gibson  
Stephen and Susan Duprey  
M. Christine Dwyer and Michael Huxtable  
Denise D. and William H. Dyer  
Pauline G. Elkin  
Dr. Louis I. Fink and Dr. Pamela L. Grich  
Tom and Peg Gaillard  
Penelope and Jeffrey Gilbert  
William and Kathy Gillett  
Jean and David Gottesman  
Jason and Rebecca Hackler  
Mr. and Mrs. Dana Hamel  
Pamela A. Harvey  
G. Arnold Haynes  
Elizabeth and Jeremy Hitchcock  
Patricia Howard and Donald Logan  
Harold and Betsy Janeway  
David and Dorothea Jensen  
Irene R. Lover  
Anne Lovett and Steve Woodsum  
Martha and Calvin Massey

Judith McKenna  
Julie Middleton and Barry West  
Anne D. Milne  
Peter and Robin Milnes  
The Montrone Family  
Mr. and Mrs. John H. Morison III  
David J. and Kathleen R. Murray  
Patrick and Kendra O'Donnell  
Ms. Jessica Papatolicas  
Pam and Ted Parrot  
Thomas and Barbara Putnam  
Elizabeth Richter and Matthew Stover  
Dr. Carol Robey and Dr. Robert Oot  
Linda and Terry Robinson  
David and Barbara Roby  
Harry and Barbara Shepler  
David and Nike Speltz  
Sharon and William Stephan  
Susan Strickler  
John F. Swope  
Richard and Ann Thorner  
Lydia Bottome Turanchik and Stephen Turanchik  
William W. Upton  
Anne and Geoffrey von Kuhn  
Robert and Binney Wells  
Joan H. White\*  
Dr. and Mrs. Robert O. Wilson  
Helen and Sumner Winebaum  
Dr. Jim Wolcott and Mrs. Jocelyn Jerry-Wolcott  
Kimon\* and Anne Zachos

### Annual Fund (\$1,000-\$1,499)

Pauline G. Elkin  
Paul and Debbie Kinson  
Judith and Jim McKenna  
Patricia Sullivan Meyers  
The Currier Fund of the NHCF, established by Margaret Dow Mudge  
David and Leslie Prothro  
Davis and Patricia Thurber

### (\$500 - \$999)

Pam and John Blackford  
Lyman and Diana Delano  
Lucius T. Hill  
Cynthia and Bruce Keller  
Joanne Lamprey  
William and Ann Marvin  
Clara Mixer  
William J. Pananos  
Melissa and Stephen Pennell  
Frederick and Adele Pulitzer  
Carlton F. Rezendes  
Bill Stelling and William Sirot  
Charles Sullivan and Susan Maycock  
Virginia and Joseph Szymanowski  
Fred Upton\*  
Robert C. Dewey and Pamela Van Arsdale  
Henry E. Vittum  
Mary Weinmann  
Anonymous

### (\$250 - \$499)

Cheryl and James Adams  
Douglas and Ellen Benjamin  
Peter Bergh and Janet Prince  
Joan C. Camann  
Michael Capozza  
Phyllis H. Carey  
Robert and Edith Carr  
Sarah and Peter Crow  
Deborah de Peyster and James Morris  
Charles and Charlotte Faulkner  
Peter and Mary Ginieres  
John P. Harrod  
Dr. Robert P. Hasserjian  
J. Michael and Marilyn Hickey  
Marjorie and Jay Hodes  
Carolyn and Philip Hollman  
Dr. and Mrs. Mahendra Hundal  
Karen and Joseph Graham  
Elin and Tupper Kinder  
W. Jean and Lucille D. Laflamme  
George and Nan Mathey  
Edward and Sue Moran  
Barry and Mahroo Morgan

Mark and Kathryn Parenti  
Jessie Pollock  
Judith and John Ransmeier  
Richard Russell  
Edwina and Monroe Scharff  
Stella J. Scheckter  
Greg Soghikian  
Hon. and Mrs. Mark W. Vaughn  
Richard and Dorothy Verney  
Diane E. Hoisel Wanger  
Dr. Susanna S. Wilkens  
Robert and Loraine Worrell

### (\$100 - \$249)

Kristen Abbott  
Nancy W. Alcock-Hood  
Joan and Stephen Ames  
Ruth Ansell\*  
Diane Y. Aubrey  
Julie and Michael Avant  
Karin and Stephen Barndollar  
Susan and Michael Barr  
Judge and Mrs. Arthur E. Bean, Jr.  
John and Merrill Beauchamp  
Roger E. Belson M.D. and Grace Cohen  
James and Elaine Bennett  
Jane Bentas  
Ms. Lila Berry  
Polly N. Berry  
Glenn and Lois Boston  
Heath and Mary Boyer  
Megan Burke-Kidder  
Raymond and Madge Burton  
Hope Zanes Butterworth  
Peg Case  
Douglas and Linda Chamberlain  
Katherine Clark  
Dr. and Mrs. Stephen J. Clark  
Sherry and Frank Collins  
David and Judy Corbit  
Robyn Cotton  
Penelope Curtis  
Diane Dalamangas and Lawrence George  
Dorothy and Roger Davies

# DONORS & MEMBERS

## DONORS

### ..... (\$100- \$249) cont.

Marilyn and David\* Davison  
Dr. and Mrs. Mark De Rosch  
Curt and Alice DeSouza Little  
Cynthia Diamantis  
Mr. and Mrs. Frederick H.  
Dobrowolski  
Macy Doherty  
Richard and Katherine Drisko  
Pauline and Richard Ducharme  
Victoria and John Duffy  
Bette H. Duhaime  
Gerald and Rochelle Durette  
Aurore and Scott Eaton  
Louis and Frances Esposito  
Jack and Sheila Evjy  
David and Susan Feltus  
Barbara and Richard Ferdinando  
Roderick and Margaret Ferland  
Aletheia and Albert Fischer  
Joslin Kimball Frank  
Richard and Ann Friedman  
David and Michelle Goldman  
Sylvia Blaksee and  
Fred Goodrich  
Nancy W. Grady\*  
Stanley S. Grant  
Eric Gregg  
Francine S. Hall  
Charles H. Hamilton, M.D.  
Jane and H.E. Harrington, Jr.  
Dr. and Mrs. John C. Herper  
Jeanne Herrick  
Daniel and Michael  
Hingston, Inc.  
Paul Hoff and  
Selma Naccach-Hoff  
John and Susan Howe  
Edwin G. Hughes III  
Gerald and Anne Indorf  
Andrew Irwin  
Vernis and Emerald\* Jackson  
Lee Jones and William Robinson  
Louis and Mary Kahn  
Sheila and Ross Kremer  
James and Donna Krisher  
Rosmarie H. Krosch

Richard and Nancy Kudler  
Jane and Steven Larmon  
Capt. and Mrs. Robert S.  
Lewellen  
David B. Lewis and  
Honey Weiss  
Cheryl and Mark Liebling  
John K. Martin  
Elizabeth and Michael Mayor  
Katharine and John McCrillis  
Sam Smoot and  
Karen McDonnell  
Mr. and Mrs. Joseph M.  
McDonough III  
Francis McFarland and  
Kathleen Rhodes  
Elaine Michaud  
Sandy and Roger Minnick  
Roya Moin  
Patricia and Richard Molan  
Louise Monast  
Elizabeth and Steve Morgan  
Ms. Gloria J. Neary  
Jean Pinckney Nelson  
Toni and Bill Pappas  
George A. Perry and  
Paula Gaudet  
Lori and Joseph Pratt  
Doris Proulx  
Donna Maria Regis  
Carol and Jack Resch  
Ann S. Richardson  
Dirk and Marnie Ruemenapp  
Gordon and Barbara Russell  
Dennis and Maureen Ryan  
John Safford  
Ray and Simone Saidel  
Joyce Saturley  
Carol and Jeff Schapira  
Bill and Jill Schoonmaker  
Susan Schultz  
Steven B. Schwartz and  
Paula Leonard-Schwartz  
Mr. and Mrs. David W.  
Sheldon  
John Shonle and Shirley Smith  
Jayme and Laura Simoes  
Barbara C. Smiles  
Bette Sotiriou

Andrew Spahr and  
Donna Dunlop  
Frederick and Ruth Stavis  
Jolene and Jon Stevens  
Margaret M. Straw  
Larry and Pia Sunderland  
Bill and Jean Tallman  
Mr. and Ms. Rodney Tenney  
James and Sandra Townsend  
Mr. and Mrs. Jim Ullman  
Judy Unger-Clark and  
John Clark  
Barbara Upton  
James C. Van Dongen  
Dr. James Walter\*  
Ralph Weber  
Jack and Pat Weeks  
James and Anita Whitehead  
Mr. and Mrs. Daniel Wolf  
John M. Young  
Anonymous (2)

### (up to \$99)

Nelson Armstrong  
Ralph H. Baer  
Harriett H. Bailey  
Carol Barr and Donald Graham  
Bruce and Michelle Baxter  
Dorothy A. Bean  
Anne Behm  
The Rev. and Mrs. Harold E.  
Beliveau  
Frederic Bell and  
William Fregosi  
Mrs. Paul Blais  
Gayle and Kenneth Blake  
Amy Blitzer  
Phyllis Bodnar  
Gloria V. Bouchard  
Francoise Bourdon and  
Clyde Kessel  
Elizabeth C. Boynton  
Helen J. Bradley  
Gina L. Bregani  
Renee Brenner  
Erna Brown  
Frank and Lorraine Brown  
Doris M. Buckley  
Donald A. Burns  
Barbara Campbell  
Martin Cannata and Karla Vogel  
Mrs. Plato L. Canotas  
Tracey and Charles Carrier  
Mark and Deborah Chag  
Scott and Andrea Chatfield  
Dorothy and Arthur Chicaderis  
Nancy Chiesa  
Virginia G. Clark  
Winfield Clark  
Mrs. Helen P. Closson  
Margaret G. Comiskey  
Jane Conradsen  
Noah Cote  
Linda Cotter-Cranston  
Glenn and Susanne Currie  
Michael and Alice DeLucia  
Mrs. Charles S. Denny  
Doris M. Desautel  
Ms. Shawne Diaz  
Diane Digirolamo  
Ms. Julia M. DiStefano  
Albert Drouart and  
Julia Lee Hong Looi  
Sam and Diane Dugan  
Sylvio and Cecile Dupuis  
Arlene\* and Bob Eckerson  
Mrs. Ralph W. Farmer  
Walt and Suki Fawcett  
Eleanor and Martin Feuer  
Susan L. Frankel  
Anne S. Frantz  
Philip F. Frazier  
Elenore Freedman  
Blanche Friedman  
Mary Alice Fullerton  
Edith Gambee  
Rev. and Mrs. William S.  
Gannon  
Mr. and Mrs. John H. Giffin Jr.  
Walter and Eleanor Goddard  
Anna and Richard Goettle  
Fran Gordon  
Mr. Frank T. Gutmann  
Mrs. Anne M. Hamilton  
Jan and Maria Havinga  
Ms. Juliana Hayden  
Susan Haydock



# DONORS & MEMBERS

## DONORS

### (Up to \$99)

Nancy Head  
Jack and Susan Herney  
Dan and Julie Hoag  
Carol and David Hulick  
Mrs. James D. Hume  
Ms. Margaret Ives  
Cynthia Johnson  
The Kalter Family  
David and Harriet Kaufman  
Howard and Janet Keegan  
James and Pamela Kelly  
Charlotte Krentzel  
James and Donna Krisher  
Addie Ann Lambarth  
Ronald Lawler and  
Margaret Merritt  
James and Barbara Brewka Lee  
Zheng Lee  
Kevin and Diane Lonergan  
Christine R. Louis  
Cynthia Mackey and  
Jeffrey Bennett  
Peter McDonough  
Mary S. McGowan  
Muriel and Robert McMillan  
Merck & Co., Inc.  
Robert and Elizabeth Michael  
Shirley Micucci  
Mr. and Mrs. Gerry Miller  
David and Robin Millward  
Mary Moran  
Edna and Mark Mordecai  
Mr. Alan Neubert  
Amy Nicholls  
E.H. Nutt  
Phyllis and Clifford Otto  
Muriel and Claude Pelletier  
Ruth and Nick Perencevich  
Joan and David Pushee  
Peter and Suzanne Read  
Georgina Reagan  
Linda and Sol Rockenmacher  
Randolph and Deborah Roody  
Elisabeth W. Russell  
Robert and Estelle Smith  
Francesca and Clint Springer  
Mr. Dan Stack

Kelly and Bruce Stoller  
Jeanne M. Sullivan  
Margaret Talcott and  
Scott Scharer  
Edmund C. Tarbell  
Sarah Tautkus  
J. Derek Teare  
Ms. Jill Teeters and  
Mr. Dave Lamothe  
Robert and Barbara Thinnies  
Margery Thomas Mueller and  
Robert Mueller  
Richard and Kathleen Thurston  
Mr. and Mrs. Bryant F. Tolles Jr.  
Germaine Trisciani  
Kevin P. Van Anglen  
Joyce and Kenneth Volk  
Mr. and Mrs. Robert W. Walker  
Sidney A. Walker  
Lorraine S. Wenger  
Ms. Wendy E. White  
Christopher and Ann Williams  
John and Helen Wilson  
Henry J. and Barbara H. Wing  
Donna and Randall Wood  
Mr. and Mrs. Ronald E. Yeager  
Janet Yorek-Basey  
Anonymous (9)

### Gifts in Memorium

Muriel and Edward Broad, *in memory of John Morison II*

Mitzi J. Dearborn Ph.D., *in memory of Barbara S. Dearborn*

Donald DeGraeve, *in memory of Gale DeGraeve*

*In memory of Hilda Fleisher*  
Anthony A. McManus  
David L.\* and Patricia Nixon

*In memory of Blanche Sargeant*  
Carol and John DeLuca  
Gayle and Daniel Zelonis  
Mark and Sally Zelonis

*In memory of David Stahl*  
Atty. William H. Craig  
Sarah Harkness  
Kimon\* and Anne Zachos  
Anonymous

## Members

### Benefactor

Howard Brodsky and  
Joan Talarico  
Michael J. Duffy II and  
Stephen C. Cornish  
Peter and Mary Ginieres  
Lucius T. Hill  
Barry and Mahroo Morgan  
Richard and Barbara Morgan  
Christiane Rothwangl and  
Hossein Vaez  
Davis and Patricia Thurber  
Charles and Christine Zoulas

### Patron

J. Peter Brady and  
Destiny Dumire  
Joan C. Camann  
Michael Capozza  
John and Julie Carter  
Sarah and Peter Crow  
Thomas E. Erickson and  
Christine E. Regan  
Stanley and Cheryl Fry  
Mr. and Mrs. James Gosselin  
Mr. and Mrs. Charles Grau  
John P. Harrod  
Garry Henkel  
Marjorie and Jay Hodes  
Carolyn and Philip Hollman  
Vernis and Emerald\* Jackson  
Ted and Donna Karwoski  
Cynthia and Bruce Keller  
Elin and Tupper Kinder  
Cheryl and Mark Liebling  
Peter Conrad and  
Janice Marchut Conrad  
L.J. Margesson and F.W. Danby  
Dennis B. Mires and  
Nancy R. Slate  
Clara Mixer

Mark and Kathryn Parenti  
Larry and Barbara Pitsch  
Jessie Pollock  
Katherine D. Rines and  
Benjamin Schore  
Edwina and Monroe Scharff  
Virginia and  
Joseph Szymanowski  
Robert C. Dewey and  
Pamela Van Arsdale  
Henry E. Vittum  
Arthur and Roberta Walmsley

### Sponsor

Edward Aloise and  
Claudia Rippee  
Janet S. Anderson  
Ann and Chuck Andon  
Ms. Glenda Arentzen  
Carol and Robert Backus  
Nancy and Robert Baker  
Karin and Stephen Barndollar  
Susan and Michael Barr  
Gail Barringer  
Sherron Bassett and  
Justin Smith  
Cecily Bastedo  
Margaret Beale and  
Robert Jones  
John and Merrill Beauchamp  
Roger E. Belson M.D. and  
Grace Cohen  
James and Elaine Bennett  
Joseph and Susan Benoit  
Jane Bentas  
Carolyn and Randy\* Benthien  
Gil and Elizabeth Biron  
Stephen Booth  
Ron Bourgeault  
Dr. David J. Steiner and  
Dr. Jayne E. Boyd  
Heath and Mary Boyer  
Terrance and Trina Brand  
James and Maryagnes Breen  
Mr. and Mrs. Ronald C.  
Brockett  
Frank and Irene Buhl  
Brendan Burke

# DONORS & MEMBERS

## Members

### Sponsor

Robert Busch  
Jed Callen and Carol Hess  
Robert and Edith Carr  
Tracey and Charles Carrier  
Deborah Chag  
Scott and Andrea Chatfield  
Dr. and Mrs. Stephen J. Clark  
Peter and Jeannette Clemons  
Alan and Suzanne Cleveland  
Mrs. Eleanor H. Colby  
Bradford and Kathleen Cook  
Thomas J. Copadis  
Elizabeth Cote  
Donald and Cecile Couturier  
Joel Cox  
Mr. and Mrs. Kenneth Cox  
Diane Curran  
Tate and Amelia Curti  
Saheed and Hannah Dahar  
Ms. Maureen Dastous  
Beth Davidson  
Robert and Mary Davies  
Mr. and Mrs. John P. Day  
Deborah de Peyster and James Morris  
Rev. Alan G. Deale  
Lyman and Diana Delano  
Macy Doherty  
Richard and Katherine Drisko  
Pauline and Richard Ducharme  
Bette H. Duhaime  
Gerald and Rochelle Durette  
Wayne Dutch  
Louis and Frances Esposito  
Mr. Forrest S. Evarts  
Charles and Charlotte Faulkner  
Liz and Christopher Fay  
Eileen Finnigan  
Rochelle and David Fogg  
Aaron Frederick  
Elenore Freedman  
Caroline French  
Albert and Diana Frost  
Mary Alice Fullerton  
Laurie Gabriel  
Karyn Gatermann and  
El Mahdy Harb

Paul Gerry  
Thomas and Eileen Getz  
George and Mary Geuras  
Alice Gianni and Michael Smith  
Michael Gold and  
Mary Mechling  
David and Michelle Goldman  
Eleanor Goldthwait  
Charles and Jaye Goodwin  
Gerald and Louise Greene  
Kathryn Growney  
Judith L. Haigh and  
Fred Norton  
Charles Hall  
Sheryl and Denis Hammond  
Linda and Joseph Hart  
J Campbell Harvey and  
Elliott Berry  
Bruce A. Harwood  
Dr. Robert P. Hasserjian  
David Hawkins  
Mr. and Mrs. Richard S.  
Hazelton  
Bill and Loretta Heuer  
Gary and Patricia Hicks  
Dardana Hoyt and Reno Orsi  
Charles and Rita Hungler  
Jill and Pierce Hunter  
David and Patricia Immen  
Gerald and Anne Indorf  
Andrew and Mary Kay James  
Mr. Mitchell B. Jean  
Mr. and Mrs. Kenneth A. Jones  
Anton and Maggie Kaska  
Michael and Debbie Kaufman  
Linda and John Kenney  
Wendy Ketchum  
Joan Kinne  
Paul and Debbie Kinson  
Harry and Sarah Kinter  
Larry and Emilia Kivimaki  
Charles and Lynn Koontz  
Tamar Krichevsky and  
Mike Rosen  
Alan and Virginia Leach  
Carol Leary  
Mike and Betty Lenehan  
Mr. and Mrs. Kenneth G. Lerner  
Anne and Thomas Lewis  
Peg and Elliot Lipin

Mike and Jan Litvin  
Rosamond D. Lockwood  
Robert and Karen  
Sheehan Lord  
Mark and Mary Lunsford  
Daniel and Marcy Lyman  
Richard and Barbara Maloney  
Lawrence and  
Elizabeth Marcotte  
Peter Martin and Lynn Freeman  
Francis Mason, Ph.D.  
Jeffrey and Karen Masors  
Frederick Matuszewski  
Timothy McAvoy  
Joyce and Robert McCray  
Mr. and Mrs. David G.  
McDonough  
Megan McIntyre and  
Jeff Matson  
Jason and Elizabeth McKinney  
Philip McKittrick  
Florence Merrill  
Richard Mills  
Cole and Martha Mills  
Dorothy and Lundy Minior  
Sandy and Roger Minnick  
Sylvia Miskoe  
Patricia and Richard Molan  
Cheryl Moore  
Iryna and Stephen Morse  
Maxine K. Morse  
Lawrence and Eileen Moyer  
James and Kathryn Muirhead  
Anthony and Karen Noce  
Frances Nutter-Upham and  
William Upham  
John and Sarah O'Connor  
Edward and Elizabeth O'Connor  
Martha E. O'Neill, Esq  
Nicole and Jason Oneail  
Doris and Virgil Orff  
William J. Pananos  
Carolyn and John Payzant  
Judith and Herbert Pence  
Melissa and Stephen Pennell  
Robin Peringer and  
Glenn Levesque  
Mr. and Mrs. Steven M. Perras  
George A. Perry and  
Paula Gaudet

Susan and Jon Posner  
Teresa Preston  
Barbara Pringle  
Donald R. Provencher  
David and Johanna Publow  
Frederick and Adele Pulitzer  
Carol Radic and Colm Darcy  
Hobart and Barbara Rand  
Patricia and Kevin Reigstad  
Susan and Mark Reiner  
Alan and Joan Reische  
Carlton F. Rezendes  
George and Ellen Robertson  
Randolph and Deborah Roody  
Ann and John Routos  
Dirk and Marnie Ruemenapp  
Gordon and Barbara Russell  
Patterson and Nan Russell  
Dennis and Maureen Ryan  
Janet and George Samuels  
Deborah and Richard Sargent  
Joyce Saturley  
Claire and Dan Scanlon  
Albert and Sharon Scaramella  
Bill and Jill Schoonmaker  
Rabbi Joshua L. Segal and  
Karen Satz  
Mr. and Mrs. David W. Sheldon  
James Shelton  
John Shonle and Shirley Smith  
Don and Moira Sieker  
Gil and Jeanne Slater  
Barbara C. Smiles  
Stephen and Ann Smith  
Francesca and Clint Springer  
Art and Kathryn Springsteen  
James and Mary Starke  
David Steelman and  
Virginia Theo-Steelman  
Bob Stegmaier  
Tom and Chris Stevens  
Deborah L. Stone  
James and Gail Straw  
Charles Sullivan and  
Susan Maycock  
Nancy Sullivan  
Mr. Paul C. Sullivan and  
Ms. Nancy R. Lord  
Kate and Scott Sussman  
Rev. Robert O. Swanson



# DONORS & MEMBERS

## MEMBERS

### Sponsor (cont.)

Rachel and Timothy Sweeney  
Margaret Talcott and  
Scott Scharer  
Bill and Jean Tallman  
Sarah L. Tappan and  
Mark Longo  
Robert Teeling  
Ms. Jill Teeters and  
Mr. Dave Lamothe  
Ute and Roy Tellini  
Carol and Paul Tingleff  
Brian and Helena Titilah  
June Trisciani and  
Jeffrey Rogers  
Judy Unger-Clark and  
John Clark  
Hon. and Mrs. Mark W. Vaughn  
Carolyn S. von Recklinghausen  
Lisa and Alex Walker  
David Weir  
Luke Wenger  
Lorraine S. Wenger  
David and Jane\* White  
Margaret Wiegand  
Dr. Susanna S. Wilkens  
Richard and Frances Winneg  
Jennifer Wise  
Mr. and Mrs. Daniel Wolf  
Harry and Anne\* Wollman  
Robert and Loraine Worrell  
Patricia B. Wright  
Nicole and Philip Wu  
Donald and Gail York  
Gerald and Candace Youngman  
Mr. and Mrs. James S. Zachos  
Peter A. Zalewski  
James Zibailo  
Anonymous (2)

## INSTITUTIONAL MEMBERS

Massachusetts College of  
Pharmacy and Health  
Moore Center Services  
New England College

New Hampshire Institute of Art  
NHTI, Concord's Community  
College  
Rivier University  
Saint Anselm College  
Southern NH University  
UNH Manchester

## MATCHING CORPORATIONS

People's United Bank  
The Walt Disney Company  
Foundation

## BUSINESS PARTNERS

**Benefactor (\$10,000+)**  
Hitchiner Manufacturing  
Co., Inc.

**Sponsor (\$5,000+)**  
Bank of America Merrill Lynch  
Optima Bank  
People's United Bank  
TD Bank

**Underwriter (\$2,500+)**  
ColArt Americas, Inc.  
Home Instead Senior Care  
John Kramer Design  
Prime, Buchholz &  
Associates, Inc.  
RiverStone Resources, LLC  
Windsor Newton Art Supply  
Company

**Supporter (\$1,000+)**  
Arnold Imaging  
Bellwether Community Credit  
Union  
Christie's  
Inked Events  
League of NH Craftsmen  
Macy's  
Nancy Carlisle Interior Plantings

R.C. Brayshaw and  
Company, Inc.  
St. Mary's Bank  
Sullivan Construction

### Associate (\$500+)

Ash Street Inn  
Birch Hill Terrace  
Curbstone Financial  
Management Corporation  
Espresso Dave's  
Genesis Pure  
Hilton Garden Inn Manchester  
NBT Bank  
Republic

### Business Partner (\$250)

Central Paper Products  
Company  
E & R Laundry and Dry  
Cleaners  
Liberty Lane Catering  
Newmarket International  
Northeast Delta Dental  
Rimmon Heights Florist

### Non-Profit Partners

Big Brothers Big Sisters of  
Greater Manchester

## EXHIBITION SUPPORT

### Africa Interweave: Textile Diasporas

Botnick Family Foundation  
The Coby Foundation, Ltd.  
M. Christine Dwyer and  
Michael Huxtable  
E&R Laundry and Dry Cleaners  
TD Charitable Foundation  
TD Bank

### Visual Dispatches from the Vietnam War

People's United Bank  
The Duprey Companies  
Nike and David Speltz  
Macy's

### Transforming Lives Through Art: 75 Years at the Currier Art Center

Windsor Newton Art Supply  
Company  
Prime Buchholz &  
Associates, Inc.

### Signs from the Sixties: Robert Indiana's Decade

David and Dorothea Jensen  
Barbara and Harry Shepler

### Exploring the Currier Inside Out: Andrew Witkin, Among Others

Nancy B. Tieken\*

### Romare Bearden: A Black Odyssey

Hitchiner Manufacturing  
Co., Inc.,  
Optima Bank  
Dwight and Susi Churchill  
Wilton Consulting Group

## PROGRAM SUPPORT

Bank of New Hampshire  
Marjorie and Donald Burke  
Dartmouth Hitchcock  
Home Instead Senior Care  
Citizens Bank Foundation  
Cogswell Benevolent Trust  
Mrs. Robert M. Doty  
Lincoln Financial Foundation,  
Inc.  
Lindner Dental Associates  
People's United Bank  
Rotary Club of Nashua - West  
TD Charitable Foundation

# DONORS & MEMBERS

## ART CENTER ANNUAL FUND

Gosselin Insurance Services

Diane Y. Aubrey

Sue Baum

Patricia and Thomas Belt

Arday Blauvelt and Marcia

Donaldson

Dr. and Mrs. R. Huntington

Breed II

Vasiliki Canotas and Mark

McCue

Kellie M. Carlin and Courtney

Cortez

Peter and Judy Cheung

Sherry and Frank Collins

Anthony Coviello

Nancy Craig

Pamela Diamantis, in honor of

Linn Krikorian

Blanche Friedman

Tom and Peg Gaillard

Peter and Mary Ginieres

Pamela A. Harvey

Fred and Nancy Harwood

Marjorie and Jay Hodes

Carolyn and Philip Hollman

Andrea and Frederick Jackson

David and Dorothea Jensen

Alana Johanson

Linnell and Richard Krikorian

Joydip and Gargi Kundu

Stephany and Ronald Lavalley

Susan L. Leidy

Christine R. Louis, in honor of

Tracey Carrier

In memory of Hilda Fleisher

Maloney & Kennedy, PLLC

Bruce McColl and Rane Hall

Rose McColl

Catherine and Peter McGovern

Anne D. Milne

Cheryl Moore

Iryna and Stephen Morse

Patrick and Kendra O'Donnell

Ms. Jessica Papatolicas

Thomas and Barbara Putnam

Catherine Rielly

James and Ann Robinson

Dennis and Maureen Ryan

Carolyn and Victor Sanchez

Carol and Jeff Schapira

Harry and Barbara Shepler

Paul Staller and Deidre O'Byrne

Nancy Devitt Stewart

Susan Strickler

Jeanne M. Sullivan

John F. Swope

Anna Thomas

in memory of Fred Rother

Judy Unger-Clark and John

Clark

Dr. Susanna S. Wilkens

George Woodman

Kimon\* and Anne Zachos

### Art Center Support

Carol Fossum, in memory of

Julie Hughes

Elsie A. Brown Fund, Inc.

St. Mary's Bank

Patrick van Rooyen

Richard and Pamela Winston

### Multimedia/Online Collections Support

Samuel P. Hunt Foundation

National Endowment for the

Arts

NH Charitable Foundation

### Zimmerman House

NH Land and Community

Heritage Investment Program

Harvey Construction

Corporation

Manchester Dental Society, in

memory of David Stahl

Sullivan Construction

Currier Museum Guild of

Volunteers

Earl Abbe

George Ballow

Renee and Mark Bernier

Cherri Brewer

Beth Burgoyne

A Bradford Carruuth

Clifton A. Gaskill

Ms. Patricia Goss

Pamela A. Harvey

Connie MacDonald

P. Miller

Heidi Norton

Gail Oakes

Jane and Jeremy Oneail

Robert Rothschedl

Molly and Tom Williams

### Operating Support

NH State Council on the Arts

and the National Endowment

for the Arts

Anonymous

### The NBT Fund

*In memory of Nancy B. Ticken*

Dwight and Susi Churchill

Elenore Freedman

Marilyn and Alan Hoffman

Patrick and Kendra O'Donnell

Susan Strickler

Kimon\* and Anne Zachos

### Bequests

Mrs. Dudley M. Baker

Charles E. Buckley

Hilda W. Fleisher

Charles E. Ireland

John Butler Smith

Nancy B. Ticken

Joan H. White

Dr. David G. Stahl

### Heart of the Arts Fund-the-Future

David and Jinjue Allen

Andrea Axman

Geraldine and Robert Boisvert

Stephen and Janece Brophy

Susan and James Callihan

Pubali and Jarrod Campbell

Jim and Gail Carolan

Shannon Chandley and Thomas

J. Silvia

Graham and Tara Chynoweth

James and Ann Conway

Deborah de Peyster and James

Morris

Andre and Donna d'Hemecourt

Joseph and Lisa Di Brigida

Pamela Diamantis

Patrick Duffy and Jaye Gibson

M. Christine Dwyer and

Michael Huxtable

Dr. and Mrs. Fontaine

Richard and Anita Galway

Carl Dawson and Susan

Goodman

Rolf and Nancy Goodwin

Jean and David Gottesman

Karen and Joseph Graham

Linda and Joseph Hart

John David and Terry

Heinzmann

Garry Henkel

Elizabeth and Jeremy Hitchcock

Morgan and Tracy Hollis

Donald Logan and Patricia

Howard

Mary Jordan

Mike and Betty Lenehan

Robert and Dawne Litterst

Maleeka Lloyd

Joel Maiola

Noboru and Hiroko Murakami

Martha E. O'Neill, Esq

Larry and Barbara Pitsch

Dr. Carol Robey and Dr. Robert

Oot

Mr. and Mrs. David Ruedig

Gail Russell and David Heath

Harry and Barbara Shepler

Bill Stelling and William Siroty

Sharon and William Stephan

Tom and Chris Stevens

Susan Strickler

Karen and Peter Tebbenhoff

Lisa and Alex Walker

Kimon\* and Anne Zachos



# DONORS & MEMBERS

## Heart-of the Arts Sponsors & Supporters

Sheehan Phinney Bass + Green  
Enterprise Bank  
Gottesman and Hollis P.A.

Jonathan Lorenz  
The White Apron  
Chris Malloy Events  
Martignetti Companies of New  
Hampshire  
Fortin Gage

Baker Newman & Noyes  
Brayman, Houle, Keating &  
Albright, PLLC  
Eaton & Berube Insurance  
Agency  
M. Christine Dwyer and  
Michael Huxtable  
Harvey Construction  
Corporation  
Holloway Motor Cars  
Louis Karno & Company  
Communications, LLC  
New Hampshire Antiques  
Co-op Inc.  
YouYou Japanese Bistro  
Weisman Tessier Lambert &  
Halloran

Stephen and Janece Brophy  
Bruce McColl and Rane Hall  
McGowan Fine Art  
Laura and Michael Redmond  
William W. Upton

## HENRY MELVILLE FULLER LEGACY SOCIETY

.....  
The Henry Melville Fuller Legacy Society of the Currier  
Museum of Art recognizes individuals who have remembered  
the museum in their estate plans. While the museum has been  
the recipient of many bequests, until now, it has not had a  
formal avenue through which commemorate these legacy gifts.  
Below are those individuals who have provided for the museum  
in their estate plans. We are deeply grateful for their intention  
and honored to carry out their wishes in perpetuity.

Warren G. Bender*	Harry and Barbara Shepler
Mr. Marston Chase*	John F. Swope
Ms. Cecily Clark	Bill and Jean Tallman
Raymond G. and Olga Cote	Richard and Ann Thorner
Pamela Diamantis	William W. Upton
Patrick Duffy and Jaye Gibson	Joan H. White*
M. Christine Dwyer and Michael Huxtable	Helen and Sumner Winebaum
Denise D. and William H. Dyer	Mrs. Marjorie Milne Winston*
Tom and Peg Gaillard	Harry and Anne Wollman
May Gruber*	Kimon* and Anne Zachos
Donald Logan and Patricia Howard	Anonymous
David and Dorothea Jensen	*Deceased
Denise M. Johnson*	
Irene R. Lover	
John F. McCarthy	
Jean P. McMillen	
Mr. and Mrs. John H. Morison III	
Thomas and Barbara Putnam	

# EXHIBITIONS & SPONSORS

## ***Visual Dispatches from the Vietnam War***

**August 3 – November 11, 2013**

Supported by People's United Bank, The Duprey Companies, Nike & David Speltz, and Macy's.

## ***Africa Interweave: Textile Diasporas***

**September 28, 2013 – January 12, 2014**

Organized by the Harn Museum of Art; the Currier's presentation of this exhibition was supported by M. Christine Dwyer, Michael Huxtable, the Botnick Family Foundation/E&R Laundry and Dry Cleaners, The Coby Foundation, Ltd, TD Charitable Foundation, and TD Bank.

## ***Signs From the Sixties: Robert Indiana's Decade***

**November 27, 2013 – April 27, 2014**

Supported by David & Dorothea Jensen and Barbara & Harry Shepler.

## ***Contemporary Connections, Exploring the Currier Inside Out: Andrew Witkin, Among Others***

**January 11 – May 11, 2014**

Supported by Nancy B. Tieken.

## ***Transforming Lives Through Art: 75 Years at the Currier Art Center***

**February 1 – March 9, 2014**

Supported by Prime Buchholz; programming support by Winsor & Newton.

## ***Romare Bearden: A Black Odyssey***

**March 29 – August 17, 2014**

Organized by the Smithsonian, the Romare Bearden Foundation and Estate, and DC Moore Gallery; sponsored by the Stavros Niarchos Foundation. The Currier's presentation of this exhibition was sponsored by Hitchiner Manufacturing Co., Inc., Optima Bank, Dwight & Susi Churchill, and Wilton Consulting Group, LLC.



Visitors at the opening of *Africa Interweave: Textile Diasporas*.



Andrew Witkin Doing research for his exhibition *Contemporary Connections, Exploring the Currier Inside Out* with librarian and archivist Meghan Petersen.



# TRUSTEES

M. Christine Dwyer, President  
 Harry Shepler, Vice President & Treasurer  
 John H. Morison III, Clerk  
 Lucy Fowlkes Breed  
 Dwight D. Churchill  
 Deborah de Peyster  
 Pamela Diamantis  
 Stephen Duprey  
 Margaret Gaillard  
 Jean Gottesman  
 Elizabeth Hitchcock  
 David A. Jensen  
 Kendra Stearns O'Donnell  
 Barbara B. Putnam  
 Nike Speltz  
 John F. Swope  
 Richard Thorner  
 William W. Upton  
 Kimon S. Zachos\*

## EMERITI

Raymond G. Cote  
 Patrick Duffy  
 Elenore Freedman  
 Anne Milne  
 Davis P. Thurber  
 Helen Winebaum

# ADVISORY COUNCIL

Deborah de Peyster, Chair  
 Jolene Stevens, Vice Chair  
 Jean Gottesman, Immediate Past  
 Chair  
 Cheri Adams  
 Sherron Bassett  
 Loraine Bernard  
 Gray Chynoweth  
 Robyn Cotton  
 Amelia Curti  
 Michael J. Duffy II  
 Kristen Enman  
 Mary Forssell  
 Joslin Kimball Frank  
 Terry Heinzmann  
 John Herman  
 Ben Kelley  
 Cynthia Kelly  
 Megan Burke Kidder  
 Amanda McGowan Lacasse  
 Jane Larmon  
 Joerg Laves  
 Shaula Levenson  
 Laurel McClead

Patricia Meyers  
 Julie Middleton  
 Liz Morgan  
 Jessie Pollock  
 Carol Robey  
 Linda Robinson  
 Bill Stelling  
 Sharon Stephan  
 Margaret Talcott  
 Rod Tenney  
 June Trisciani  
 Pamela van Arsdale

# GUILD OF VOLUNTEERS EXECUTIVE COMMITTEE

Dennie Dyer, Executive Chair  
 Nancy Baker, Executive Vice-Chair  
 Angela Hoke, Treasurer  
 Theia Fischer, Secretary  
 Nancy McGaan, Guild Communications Chair  
 Nancy Johnson, Meetings and Programs Chair  
 Barbara Shepler, Guild Membership Chair  
 Roberta Lavey, Museum Docents Chair  
 Sandra Chandonnet, Museum Shop Chair  
 Fran Nutter-Upham, Representative-at-Large  
 Marilyn Watson, Zimmerman House Docents Chair



The Guild of Volunteers luncheon.

# STAFF

## **DIRECTOR'S OFFICE**

Susan Strickler  
Barbara Jaus

## **BUSINESS OFFICE**

Sherry Collins  
Alana Johanson  
Paula Senneville

## **MUSEUM SHOP**

Heidi Norton  
Korrena Cowing  
Valerie Laker

## **CURATORIAL**

Andrew Spahr  
Jeff Allen  
Cynthia Mackey  
Karen Papineau  
Meghan Petersen  
Kurt Sundstrom  
Aimie Westphal  
Karl Hutchins  
Jane Beaulieu

## **DEVELOPMENT**

Paul Staller  
Stacy Broulidakis  
Carey Cahoon  
Sara Turner  
Jennifer Minicucci

## **GUEST SERVICES**

Maria O'Leary  
Tracey Carrier  
Melanie Larson  
Michael Piantedosi  
Stephen Stanley  
Ryan Sanborn

## **PR & MARKETING**

Steven Konick  
Neva Cole

## **PUBLIC PROGRAMS**

Leah Fox  
Jane Seney Oneail  
Lynn Thomson  
Alexis Nelson  
Megan McIntyre

## **OPERATIONS**

Karen Graham  
Lisa Solange Pavlopoulos  
Kate Sussman

## **CAFÉ**

Joseph Sylvester  
Sara Larson  
Deanna Parenteau  
Tammy Sarette  
Jeff Volkers  
Corey Sylvia  
William Mottram

## **FACILITIES**

Nelson Goddard  
Robert Desrochers  
Matthew McMahon  
Ron Sklutas  
Michael Somers

## **SECURITY**

Evan Benoit  
David Bundzinski  
Lauren Dadmun  
Matthew Dadmun  
Jerrilee Maille  
Nathan St. Pierre  
Mina Al Rais  
Keyandra Barchay-Robinson  
Jessalyn Benson  
Amy Bettencourt  
Emile Boire  
Nicholas Bugieda  
Cormac Doherty  
Russell Gebo  
Dan Griffin  
John Griffin  
Thomas Hobbs  
Cody Huot  
Kimberly Johnson

Alison Keller  
Daniel Larson  
John Maguire  
Eric Maille  
Theophilus Martey  
Yammilette Pizarro-Matias  
Anthony Provenzano  
Jennifer Robinson  
Majed Sabri  
Lucas Troy  
Douglas Tyler  
Jeff Valluzzi  
Shane Waller

## **ART CENTER**

### *Administration*

Bruce McColl  
Sadie Barton  
Linn Krikorian  
Rachel Montroy  
Danielle Gosselin  
Angela Hyde

## *Faculty*

Marek Bennett  
Patricia Benson  
Beth Brisson  
Annie Campbell  
Daniele Caradonna  
Rocco Caradonna  
Ellie Clough  
Nancy Craig  
Ellen Davison  
Pamela DiFloures  
Corey Doherty  
Jerry Holbert  
June Latti  
Corie Lyford  
Joseph Montroy  
Kristine Nyhan  
Amy O'Boyle  
John O'Shaughnessy  
Joy Raskin  
Monique Staples  
Laura Zorawowicz



Staff members Bruce McColl and Meghan Petersen look through Art Center archives in the Currier Museum Library.



# FINANCIAL STATEMENT

## Condensed Statement of Financial Position

<b>ASSETS</b>	<b>2014</b>	<b>2013</b>
Investments	\$85,156,754	\$83,679,088
Receivables	604,072	138,821
Other current assets	445,459	394,972
Property, plant and equipment, net of depreciation	17,755,603	18,591,186
<b>TOTAL ASSETS</b>	<b>\$103,961,888</b>	<b>\$102,804,067</b>

## LIABILITIES AND NET ASSETS

Current liabilities	\$316,269	\$286,647
Long term debt	0	7,577,576
Net assets:		
Unrestricted	1,704,513	742,515
Temporarily restricted	51,439,048	43,705,271
Permanently restricted for operations and acquisitions	50,502,058	50,492,058
<b>TOTAL LIABILITIES AND NET ASSETS</b>	<b>\$103,961,888</b>	<b>\$102,804,067</b>

## Supplemental Schedule of Pro Forma Operating Activities

June 30, 2014 and 2013

<b>SUPPORT AND REVENUE FOR OPERATIONS</b>	<b>2014</b>	<b>2013</b>
Investment income used for current year's operations	\$2,231,599	\$2,330,716
Transfers from named funds	127,062	182,637
Museum	1,255,738	1,089,032
Art Center	254,026	280,063
Exhibitions	131,500	104,000
Zimmerman House	85,940	60,843
<b>TOTAL SUPPORT AND REVENUE FOR OPERATIONS</b>	<b>4,085,865</b>	<b>4,047,291</b>

## OPERATING EXPENSES

Museum	3,386,290	3,377,064
Art Center	319,200	326,633
Exhibitions	143,278	138,040
Zimmerman House	127,878	109,356
General and administrative	97,110	92,714
<b>TOTAL OPERATING EXPENSES</b>	<b>4,073,756</b>	<b>4,043,807</b>

Support & revenue restricted to or designated for current year's operations in excess of expenses	\$12,109	\$3,484
---	----------	---------

NOTE: The pro forma statement of operating activities recognized the investment income and transfers from the endowment funds in accordance with the Board of Trustees funding policy as support and revenue rather than all investment income, gains and losses. In addition, certain non-operating expenditures are not recognized, including collection items purchased but not capitalized, depreciation, investment and interest expense; and certain nonoperating revenues are not recognized, including gains on sales of deaccessioned art and other gains. Accordingly, this presentation differs significantly from the statement of activities as presented in the Museum's audited financial statements and from generally accepted accounting principles. The Museum's policy is to annually allocate 5% of the average valuation of the operating endowment funds over the previous 20 quarters to fund the Museum's operations. For the years ended June 30, 2014 and 2013, 5.4% and 6.3% respectively, of the average valuation of the fair value of endowment funds was allotted to Museum operations. Management believes this pro forma presentation reflects support and revenue utilized to fund the Museum's annual operating expenses for the periods presented. The Museum does not capitalize its objects of art donated or purchased.